

## DOCUMENT RESUME

ED 454 083

SE 065 047

TITLE The Structures of Life.  
INSTITUTION National Inst. of General Medical Sciences (NIH), Bethesda, MD.  
REPORT NO NIH-01-2778  
PUB DATE 2000-11-00  
NOTE 69p.  
AVAILABLE FROM For full text: <http://www.nigms.nih.gov>.  
PUB TYPE Books (010) -- Guides - Classroom - Teacher (052)  
EDRS PRICE MF01/PC03 Plus Postage.  
DESCRIPTORS \*Biology; \*Biomedicine; High Schools; Higher Education; \*Science Activities; Science Careers; \*Science Instruction; Spectroscopy

## ABSTRACT

This booklet, geared toward an advanced high school or early college-level audience, explains how structural biology provides insight into health and disease and is useful in developing new medications. This publication contains a general introduction to proteins, coverage of the techniques used to determine protein structures, and a chapter on structure-based drug design. The booklet features "Student Snapshots," designed to inspire young people to consider careers in biomedical research. Review questions at the end of each chapter are also included. Chapter 1 discusses the "structures of life" and their role in the structure and function of all living things. In Chapters 2 and 3, X-ray crystallography and nuclear magnetic resonance spectroscopy tools that structural biologists use to study the detailed shapes of proteins and other biological molecules are described. Chapter 4 explains how the shape of proteins can be used to help design new medications, in this case drugs to treat AIDS and arthritis. Chapter 5 provides more examples of how structural biology teaches about all life processes, including those of humans. (ASK)



ED 454 083

# The Structures of Life

SE 065 047

U.S. DEPARTMENT OF EDUCATION  
Office of Educational Research and Improvement  
EDUCATIONAL RESOURCES INFORMATION  
CENTER (ERIC)  
This document has been reproduced as  
received from the person or organization  
originating it.  
 Minor changes have been made to  
improve reproduction quality.  
  
• Points of view or opinions stated in this  
document do not necessarily represent  
official OERI position or policy.

National Institutes of Health  
National Institute of General Medical Sciences

BEST COPY AVAILABLE

2

ERIC  
Full Text Provided by ERIC



# *The Structures of Life*

U.S. DEPARTMENT OF  
HEALTH AND HUMAN SERVICES  
Public Health Service  
National Institutes of Health  
National Institute of General Medical Sciences

NIH Publication No. 01-2778  
Revised November 2000  
[www.nigms.nih.gov](http://www.nigms.nih.gov)



# Contents

<b>PREFACE: WHY STRUCTURE?</b>	<b>IV</b>
<b>CHAPTER 1: PROTEINS ARE THE BODY'S WORKER MOLECULES</b>	<b>2</b>
Proteins Are Made From Small Building Blocks	3
Proteins Fold Into Spirals and Sheets	7
The Problem of Protein Folding	8
Structural Genomics: From Gene to Structure, and Perhaps Function	11
<b>CHAPTER 2: X-RAY CRYSTALLOGRAPHY: ART MARRIES SCIENCE</b>	<b>14</b>
Crystal Cookery	16
Why X-Rays?	20
Synchrotron Radiation—One of the Brightest Lights on Earth	21
Scientists Get MAD at the Synchrotron	24
<b>CHAPTER 3: THE WORLD OF NMR: MAGNETS, RADIO WAVES, AND DETECTIVE WORK</b>	<b>26</b>
The Many Dimensions of NMR	30
Spectroscopists Get NOESY for Structures	32
A Detailed Structure: Just the Beginning	32
<b>CHAPTER 4: STRUCTURE-BASED DRUG DESIGN: FROM THE COMPUTER TO THE CLINIC</b>	<b>36</b>
Revealing the Target	38
A Hope for the Future	44
Gripping Arthritis With “Super Aspirin”	48
<b>CHAPTER 5: BEYOND DRUG DESIGN</b>	<b>52</b>
Muscle Contraction	52
Transcription and Translation	53
Photosynthesis	54
Signal Transduction	54
<b>GLOSSARY</b>	<b>56</b>

## Why Structure?

Imagine that you are a scientist probing the secrets of living systems not with a scalpel or microscope, but much deeper—at the level of single molecules, the building blocks of life. You'll focus on the detailed, three-dimensional structure of biological molecules. You'll create intricate models of these molecules using sophisticated computer graphics.

You may be the first person to see the shape of a molecule involved in health or disease.

You are part of the growing field of structural biology.

The molecules whose shapes most tantalize structural biologists are proteins, because these molecules do most of the work in the body.

Like many everyday objects, proteins are shaped to get their job done. The structure of a protein

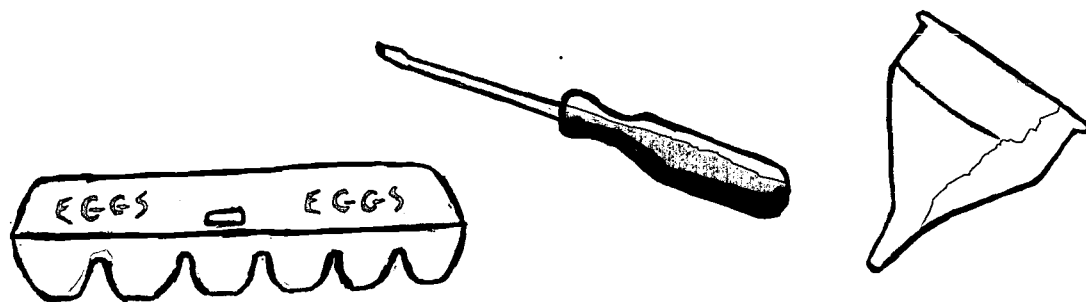
offers clues about the role it plays in the body. It may also hold the key to developing new medicines, materials, or diagnostic procedures.

In Chapter 1, you'll learn more about these “structures of life” and their role in the structure and function of all living things. In Chapters 2 and 3, you'll learn about the tools—X-ray

In addition to teaching about our bodies, these

“structures of life” may hold the key to developing new medicines, materials, and diagnostic procedures.

crystallography and nuclear magnetic resonance spectroscopy—that structural biologists use to study the detailed shapes of proteins and other biological molecules.



▲ Proteins, like many everyday objects, are shaped to get their job done. The long neck of a screwdriver allows you to tighten screws in holes or pry open lids. The depressions in an egg carton are designed to cradle eggs so they won't break. A funnel's wide

brim and narrow neck enable the transfer of liquids into a container with a small opening. The shape of a protein—although much more complicated than the shape of a common object—teaches us about that protein's role in the body.

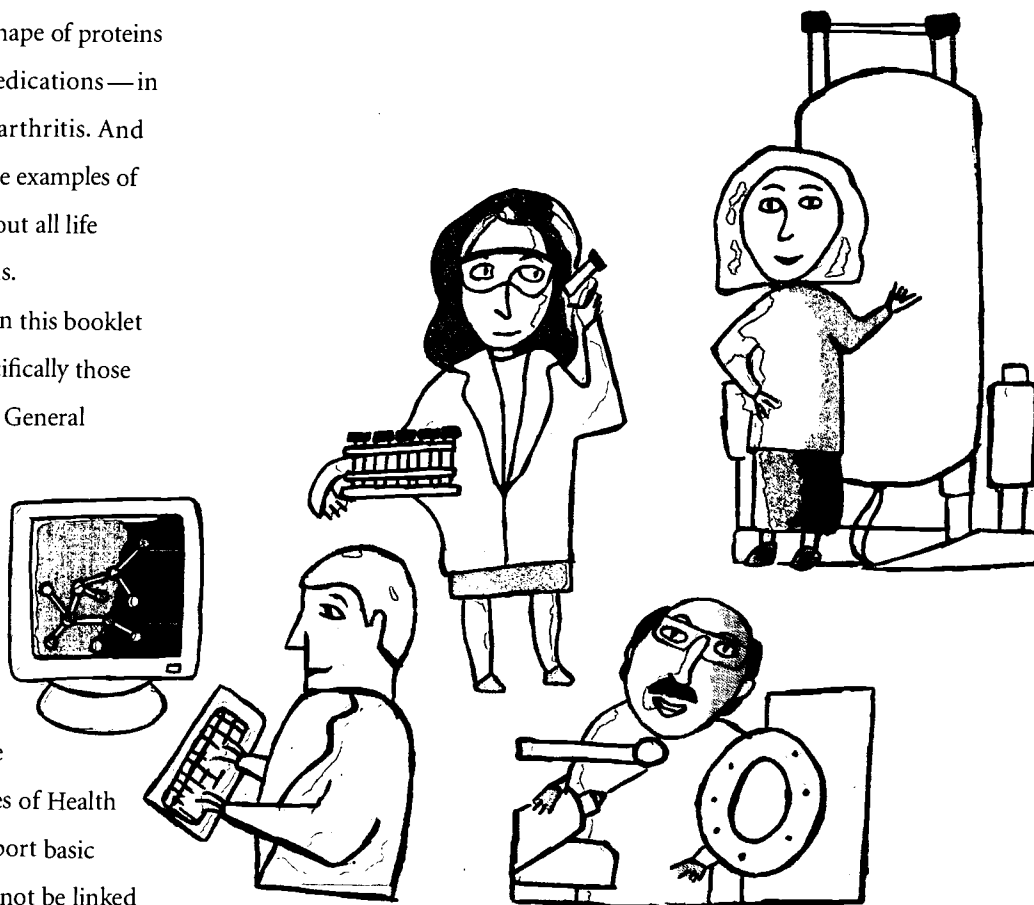
Chapter 4 will explain how the shape of proteins can be used to help design new medications—in this case, drugs to treat AIDS and arthritis. And finally, Chapter 5 will provide more examples of how structural biology teaches us about all life processes, including those of humans.

Much of the research described in this booklet is supported by U.S. tax dollars, specifically those awarded by the National Institute of General Medical Sciences (NIGMS) to scientists at universities across the nation. NIGMS supports more structural biology than any other private or government agency in the world.

NIGMS is also unique among the components of the National Institutes of Health (NIH) in that its main goal is to support basic biomedical research that at first may not be linked to a specific disease or body part. These studies increase our understanding of life's most fundamental processes—what goes on at the molecular and cellular level—and the diseases that result when these processes malfunction.

Advances in such basic research often lead to many practical applications, including new scientific tools and techniques, and fresh approaches to diagnosing, treating, and preventing disease.

Alisa Zapp Machalek  
Science Writer, NIGMS  
November 2000



△ Structural biology requires the cooperation of many different scientists, including biochemists, molecular biologists, X-ray crystallographers, and NMR spectroscopists. Although these

researchers use different techniques and may focus on different molecules, they are united by their desire to better understand biology by studying the detailed structure of biological molecules.

## Proteins Are the Body's Worker Molecules

You've probably heard that proteins are important nutrients that help you build muscles. But they are much more than that. Proteins are the worker molecules that make possible every activity in your body. They

circulate in your blood, seep from your tissues, and grow in long strands out of your head. Proteins are also the key components of biological materials ranging from silk fibers to elk antlers.

Proteins are the worker molecules that make possible every activity in your body.



▲ Proteins have many different functions in our bodies. By studying the structures of proteins, we are better able to understand how they function normally and how some proteins with abnormal shapes can cause disease.



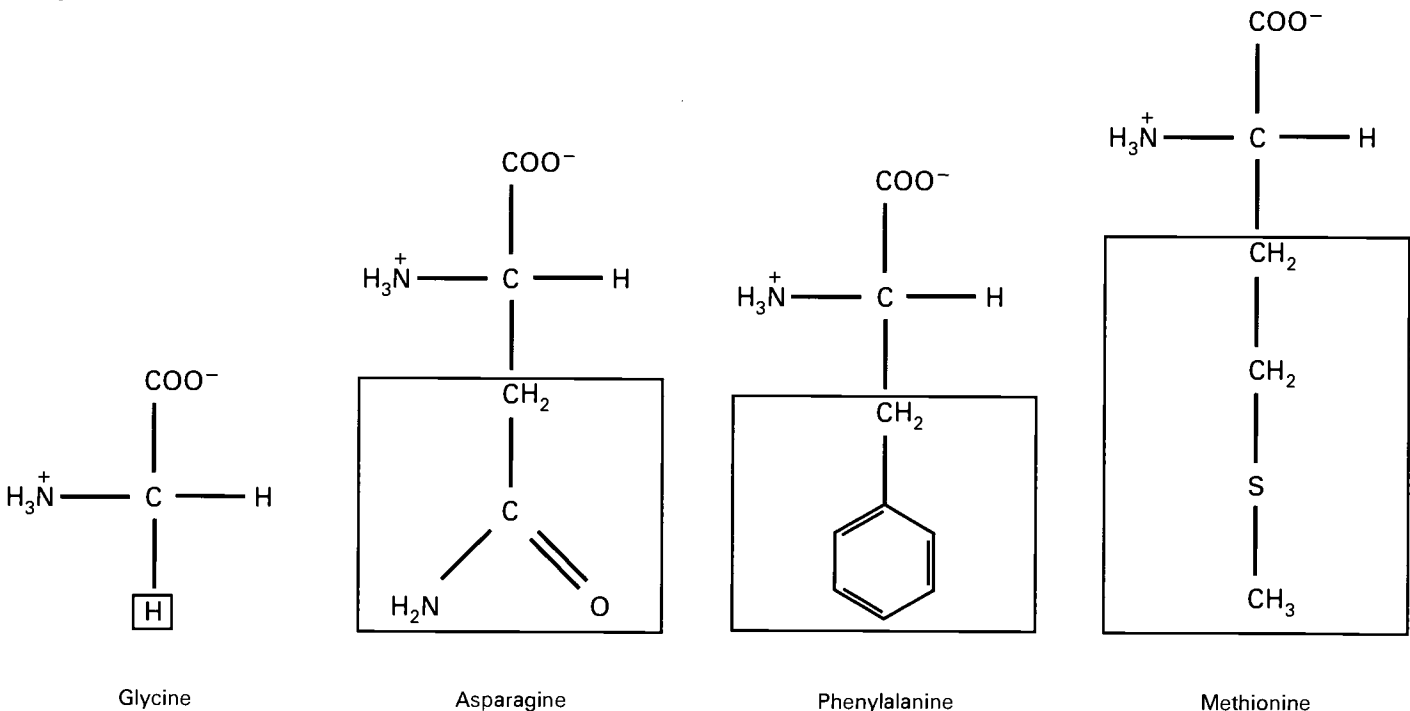
## Proteins Are Made From Small Building Blocks

Proteins are like long necklaces with differently shaped beads. Each "bead" is a small molecule called an amino acid. There are 20 standard amino acids, each with its own shape, size, and properties.

Proteins contain from 50 to 5,000 amino acids hooked end-to-end in many combinations. Each protein has its own sequence of amino acids.

These amino acid chains do not remain straight and orderly. They twist and buckle, folding in upon themselves, the knobs of some amino acids nestling into grooves in others.

Only when the protein settles into its final shape does it become active. This process is complete almost immediately after proteins are made. Most proteins fold in less than a second, although the largest and most complex proteins may require several seconds to fold. Some proteins need help from other proteins, called "chaperones," to fold efficiently.

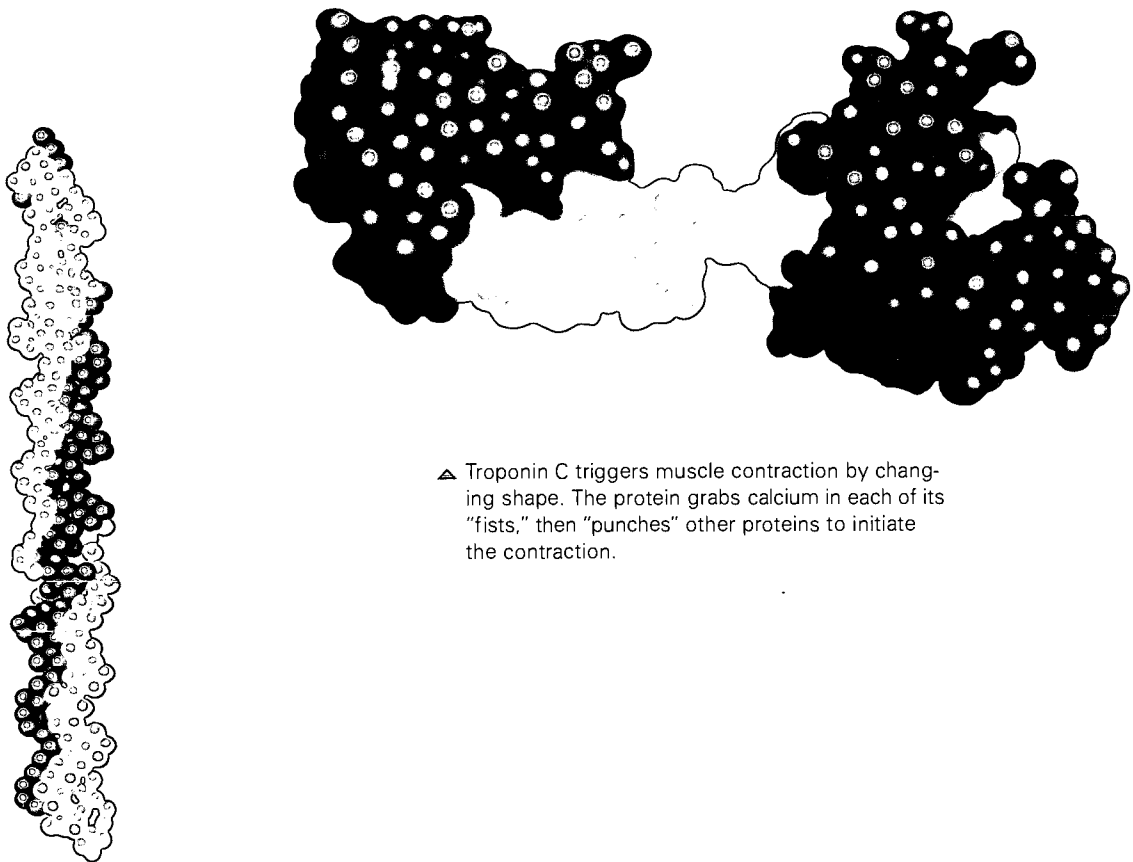


- △ Amino acids are like differently shaped "beads" that make up protein "necklaces." Shown here are a few examples of the 20 standard amino acids. Each amino acid contains an identical backbone structure (in black) and a unique side chain, also called an R-group (in red box). The shapes and chemical properties of these side chains are responsible for the twists and folds of the protein as well as for the protein's biological function.



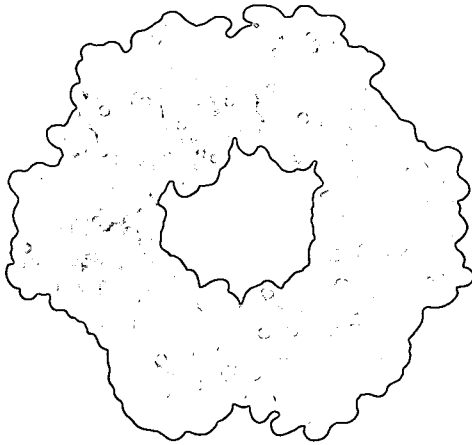
Because proteins have diverse roles in the body, they come in many shapes and sizes.

Studies of these shapes teach us how the proteins function in our bodies and help us understand diseases caused by abnormal proteins.

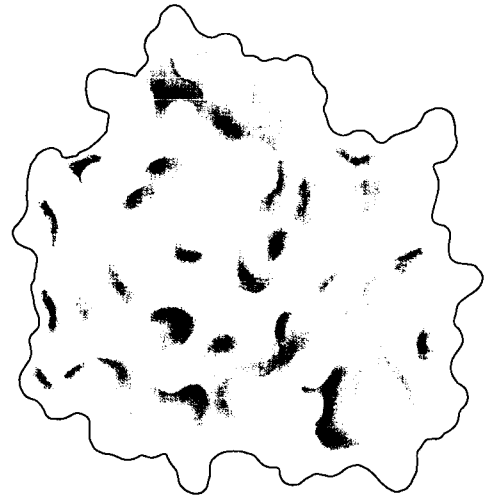


▲ Troponin C triggers muscle contraction by changing shape. The protein grabs calcium in each of its "fists," then "punches" other proteins to initiate the contraction.

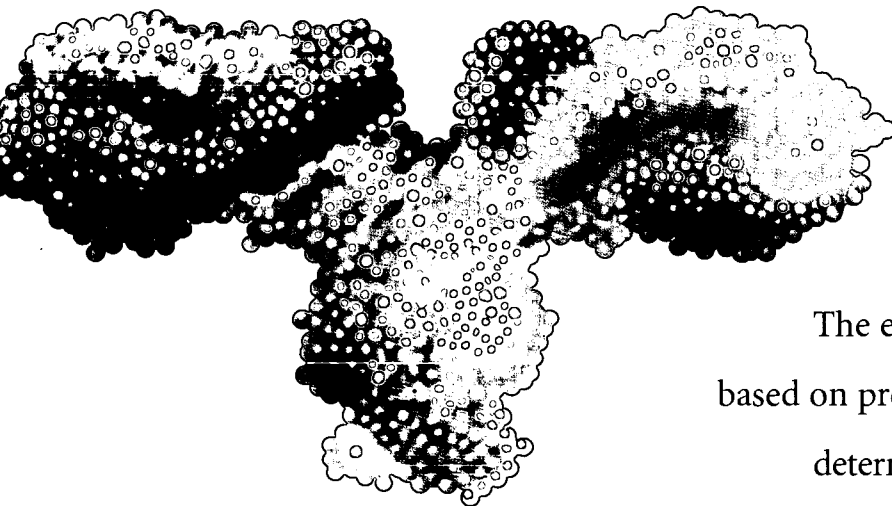
▲ Collagen in our cartilage and tendons gains its strength from its three-stranded, rope-like structure.



△ Some proteins latch onto and regulate the activity of our genetic material, DNA. Some of these proteins are donut shaped, enabling them to form a complete ring around the DNA. Shown here is DNA polymerase III, which cinches around DNA and moves along the strands as it copies the genetic material.



△ Many proteins, like the digestive enzyme chymotrypsin, are somewhat spherical in shape. Enzymes, which are proteins that facilitate chemical reactions, often contain a groove or pocket to hold the molecule they act upon.



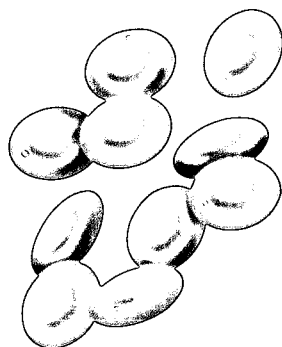
△ Antibodies are immune system proteins that rid the body of foreign material, including bacteria and viruses. The two arms of the Y-shaped antibody bind to a foreign molecule. The stem of the antibody sends signals to recruit other members of the immune system.

The examples here are schematic drawings based on protein shapes that have been determined experimentally. When scientists decipher protein structures, they deposit the three-dimensional coordinates into the Protein Data Bank, currently available at <http://www.rcsb.org/pdb/>.

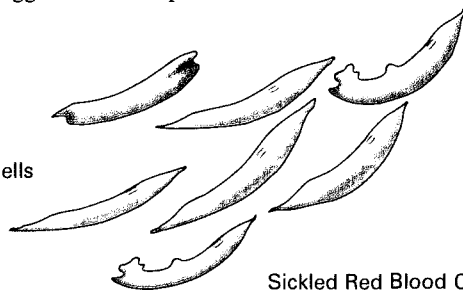
## Small Errors in Proteins Can Cause Disease

Sometimes, an error in just one amino acid can cause disease. Sickle cell disease, which most often affects those of African descent, is caused by a single error in the gene for hemoglobin, the oxygen-carrying protein in red blood cells.

This error, or mutation, results in an incorrect amino acid at one position in the molecule. Hemoglobin molecules with this incorrect amino acid stick together and distort the normally smooth, lozenge-shaped red blood cells into jagged sickle shapes.



Normal Red Blood Cells



Sickled Red Blood Cells

The most common symptom of the disease is unpredictable pain in any body organ or joint, caused when the distorted blood cells jam together, unable to pass through small blood vessels. These blockages prevent oxygen-carrying blood from getting to organs and tissues. The frequency, duration, and severity of this pain vary greatly between individuals.

The disease affects about 1 in every 500 African Americans, and 1 in 12 carry the trait and can pass it on to their children, but do not have the disease themselves.

Another disease caused by a defect in one amino acid is cystic fibrosis. This disease is most common in those of northern European descent, affecting about 1 in 9,000 Caucasians in the United States. Another 1 in 20 are carriers.

The disease is caused when a protein called CFTR is incorrectly folded. This misfolding is usually caused by the deletion of a single amino acid in CFTR. The function of CFTR, which stands for cystic fibrosis transmembrane conductance regulator, is to allow chloride ions (a component of table salt) to pass through the outer membranes of cells.

When this function is disrupted in cystic fibrosis, glands that produce sweat and mucus are most affected. A thick, sticky mucus builds up in the lungs and digestive organs, causing malnutrition, poor growth, frequent respiratory infections, and difficulties breathing. Those with the disorder usually die from lung disease around the age of 30.

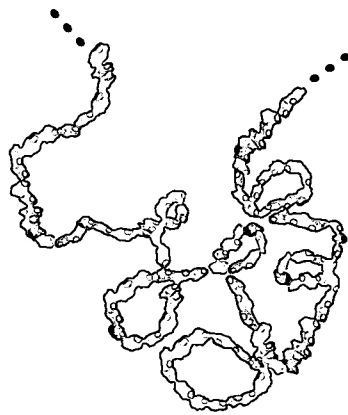
### Proteins Fold Into Spirals and Sheets

When proteins fold, they don't randomly wad up into twisted masses. Often, short sections of proteins form recognizable shapes such as "alpha helices" or "beta sheets." Alpha helices are spiral shaped and beta sheets are pleated structures. Scientists

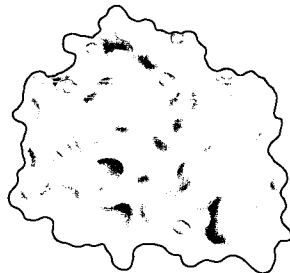
devised a stylized method of representing proteins, called a ribbon diagram, that highlights helices and sheets. These organized sections of a protein pack together with each other—or with other, less organized sections—to form the final, folded protein.



△ Proteins are made of amino acids hooked end-to-end like beads on a necklace.



◁ To become active, proteins must twist and fold into their final, or "native," conformation.



◁ This final shape enables proteins to accomplish their function in your body.

### **The Problem of Protein Folding**

A given sequence of amino acids almost always folds into a characteristic, three-dimensional structure. So scientists reason that the instructions for folding a protein must be encoded within the sequence. Researchers can easily determine a protein's amino acid sequence. But for 50 years they've tried—and failed—to crack the code that governs folding.

Scientists call this the “protein folding problem,” and it remains one of the great challenges in structural biology. Although researchers have teased out some general rules and, in some cases, can make rough guesses of a protein's shape, they cannot accurately and reliably predict a final structure from an amino acid sequence.

The medical incentives for cracking the folding code are great. Several diseases—including Alzheimer's, cystic fibrosis, and “mad cow” disease—are thought to result from misfolded proteins. Many scientists believe that if we could decipher the structures of proteins from their sequences, we could improve the treatment of these diseases.

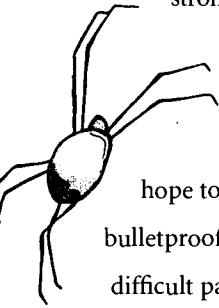
“If we could decipher the structures of proteins from their sequences, we could better understand all sorts of biological phenomena, from cancer to AIDS. Then we might be able to do more about these disorders.”

James Cassatt  
Director, Division of Cell Biology and Biophysics  
National Institute of General Medical Sciences

## Provocative Proteins

- There are about 100,000 different proteins in your body.

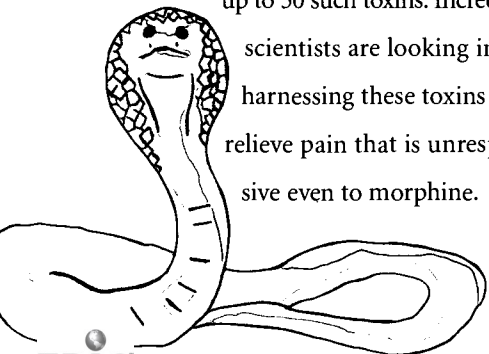
- Spider webs and silk fibers are made of the strong, pliable protein fibroin. Spider silk is stronger than a steel rod of the same diameter, yet it is much more elastic, so scientists hope to use it for products as diverse as bulletproof vests and artificial joints. The difficult part is harvesting the silk, because spiders are much less cooperative than silkworms!



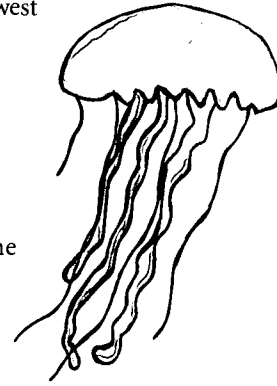
- The light of fireflies (also called lightning bugs) is made possible by a protein called luciferase. Although most predators stay away from the bitter-tasting insects, some frogs eat so many fireflies that they glow!



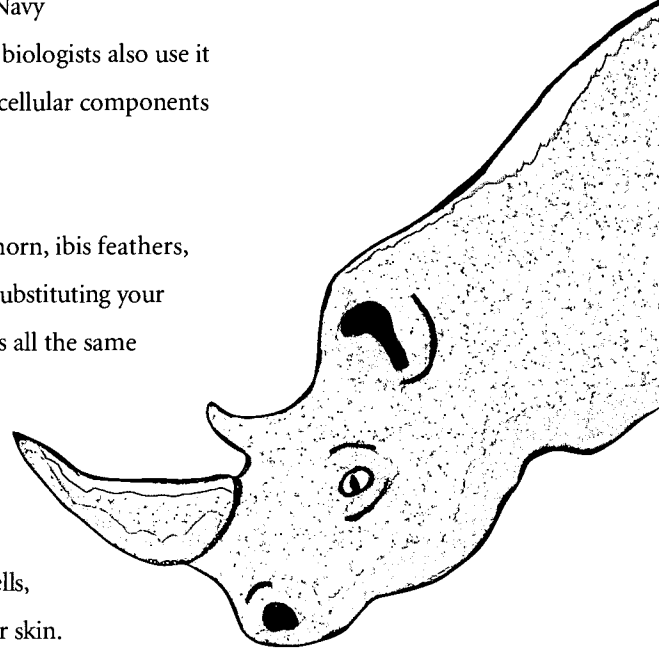
- The deadly venoms of cobras, scorpions, and puffer fish contain small proteins that act as nerve toxins. Some sea snails stun their prey (and occasionally, unlucky humans) with up to 50 such toxins. Incredibly, scientists are looking into harnessing these toxins to relieve pain that is unresponsive even to morphine.



- Sometimes ships in the northwest Pacific Ocean leave a trail of eerie green light. The light is produced by a protein in jellyfish when the creatures are jostled by ships. Because the trail traces the path of ships at night, this green fluorescent protein has interested the Navy for many years. Many cell biologists also use it to fluorescently mark the cellular components they are studying.



- If a recipe calls for rhino horn, ibis feathers, and porcupine quills, try substituting your own hair or fingernails. It's all the same stuff—alpha-keratin, a tough, water-resistant protein that is also the main component of wool, scales, hooves, tortoise shells, and the outer layer of your skin.



## High-Tech Tinkertoys®

Decades ago, scientists who wanted to study a molecule's three-dimensional structure would have to build a large Tinkertoy®-type model out of rods, balls, and wire scaffolding. The process was laborious and clumsy, and the models often fell apart.

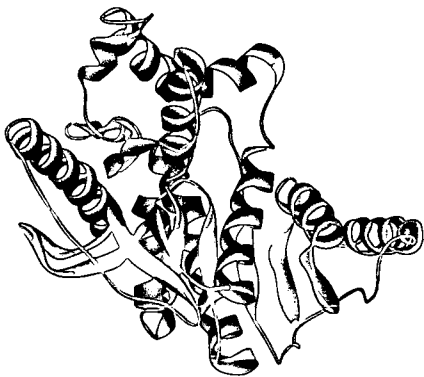
Today, researchers use computer graphics to display and manipulate molecules. They can even see how molecules might interact with one another.

In order to study different aspects of a molecule's structure, scientists view the molecule in several ways. Below you can see one protein shown in three different styles.

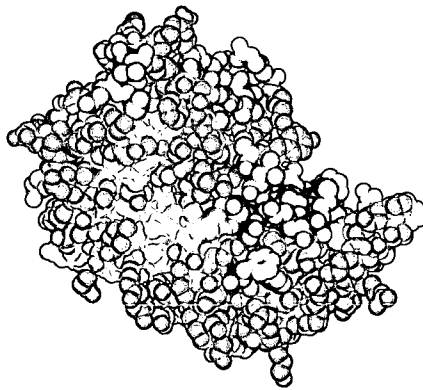
You can try one of these computer graphics programs yourself at <http://www.proteinexplorer.org>.



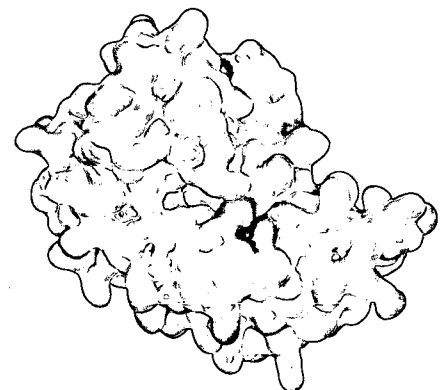
Richard T. Nowitz



- ▲ Ribbon diagrams highlight organized regions of the proteins. Alpha helices (red) appear as spiral ribbons. Beta sheets (aqua) are shown as flat ribbons. Less organized areas appear as round wires or tubes.



- ▲ Space-filling molecular models attempt to show atoms as spheres whose size correlates with the amount of space the atoms occupy. For consistency, the same atoms are colored red and aqua in this model and in the ribbon diagram.



- ▲ A surface rendering of the protein shows its overall shape and surface properties. The red and blue coloration indicates the electrical charge of atoms on the protein's surface.



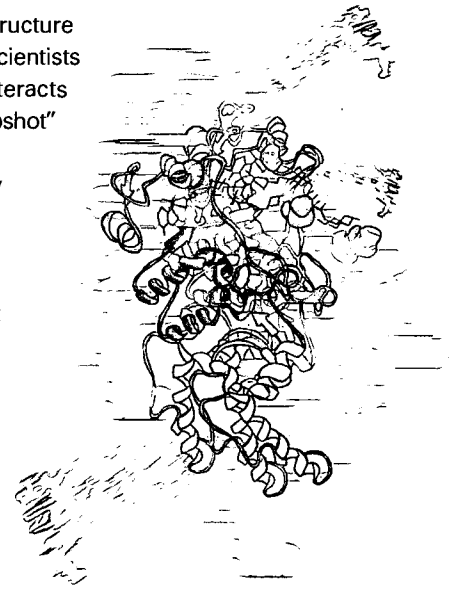
## *The Wiggling World of Proteins*

Although the detailed, three-dimensional structure of a protein is extremely valuable to show scientists what the molecule looks like and how it interacts with other molecules, it is really only a "snapshot" of the protein frozen in time and space. Proteins are not rigid, static objects—they are dynamic, rapidly changing molecules that move, bend, expand, and contract. Scientists are using complex programs on ultra-high-speed computers to predict and study protein movement.

Using these 10,000 or so structures as a guide, researchers expect to be able to use computers to model the structures of any other protein.

Scientists learn much from comparing the structures of different proteins. Usually—but not always—two similarly shaped proteins have similar biological functions. By studying thousands of molecules in an organized way in this project, researchers will deepen their understanding of the relationships between gene sequence, protein structure, and protein function.

In addition to any future medical or industrial applications, researchers expect that by studying the structure of all proteins from a single organism—or proteins from different organisms that serve the same physiological function—they will learn fundamental lessons about biology.



### **Structural Genomics: From Gene to Structure, and Perhaps Function**

The potential value of cracking the protein folding code increases daily as the Human Genome Project amasses vast quantities of genetic sequence information. This government project was established to obtain the entire genetic sequence of humans and other organisms. From these complete genetic sequences, scientists can easily obtain the amino acid sequences of all of an organism's proteins by using the "genetic code."

The ultimate dream of many structural biologists is to determine directly from these sequences not only the three-dimensional structure, but also some aspects of the function, of all proteins. This vision has spurred a new field called structural genomics and a collaborative, international effort.

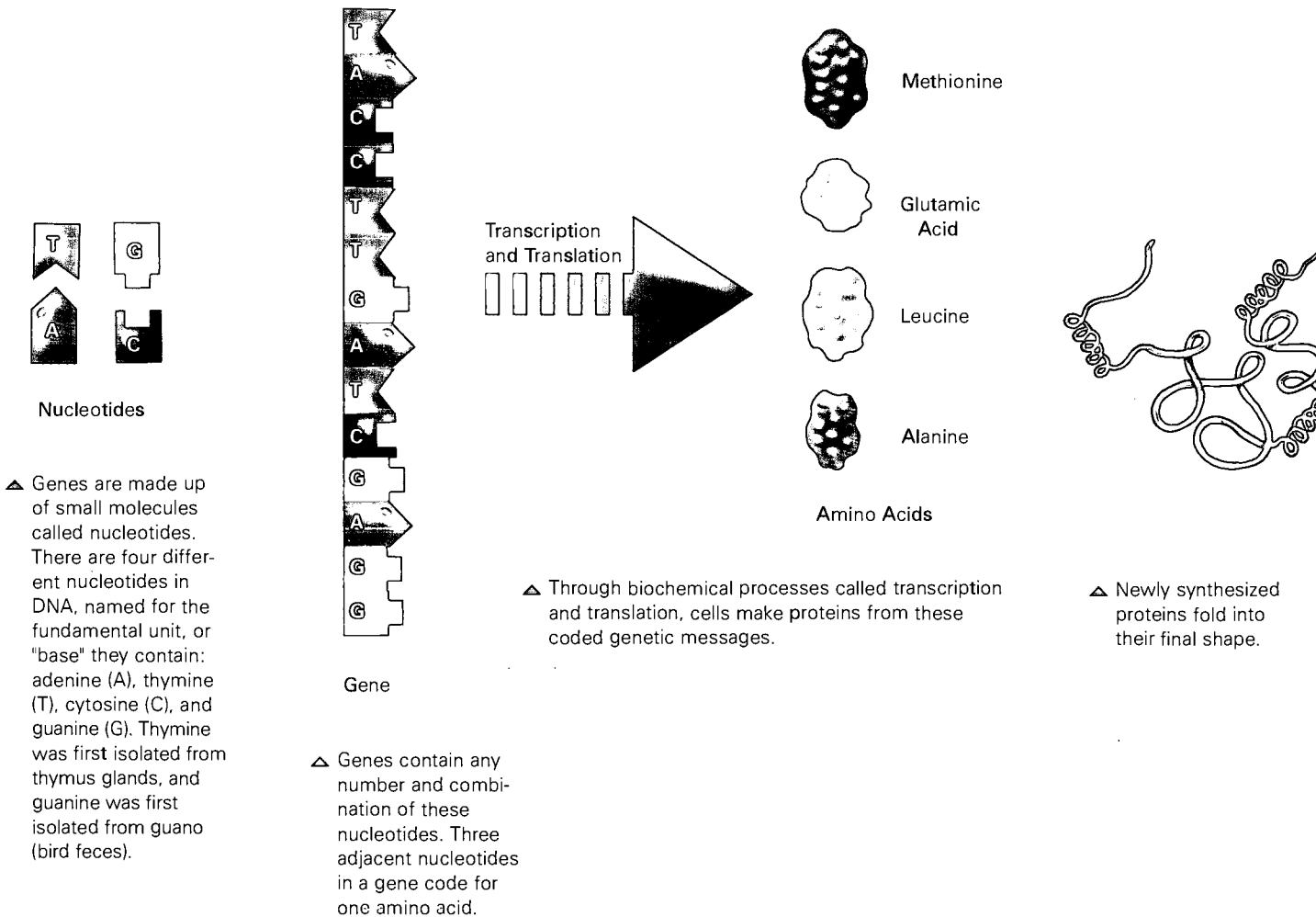
Groups of scientists have begun to categorize all known proteins into families, based on their amino acid sequences and a prediction of their rough, overall structure. Just as some people can be recognized as members of a family because they share a certain feature—such as a cleft chin or long nose—members of a protein family share structural characteristics, based on similarities in their amino acid sequences.

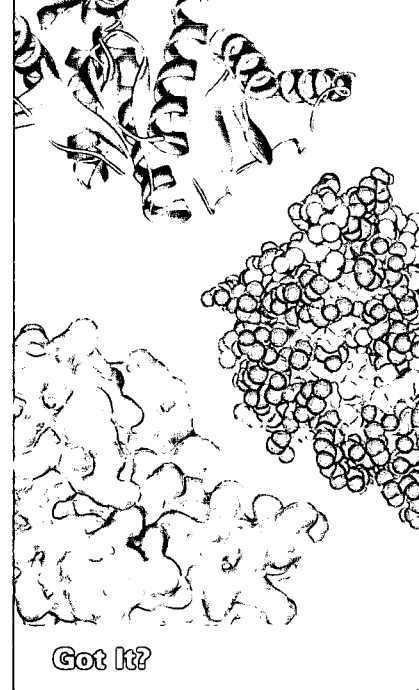
Researchers plan to determine the detailed, three-dimensional structures of one or more representative proteins from each of the families. They estimate that the total number of such representative structures will be at least 10,000.

# The Genetic Code

In addition to the protein folding code, which remains unbroken, there is another code, a genetic code, that scientists cracked in the mid-1960s. The genetic code reveals how gene sequences correspond to amino acid sequences.

Genes are made of DNA (deoxyribonucleic acid), which itself is composed of small molecules called nucleotides connected together in long chains. A run of three nucleotides (called a triplet), encodes one amino acid.

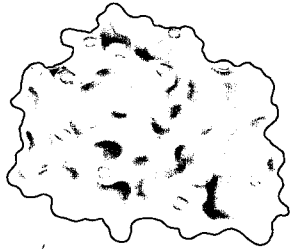




UUU phenylalanine UUC phenylalanine UUA leucine UUG leucine	UCU serine UCC serine UCA serine UCG serine	UAU tyrosine UAC tyrosine UAA stop UAG stop	UGU cysteine UGC cysteine UGA stop UGG tryptophan
CUU leucine CUC leucine CUA leucine CUG leucine	CCU proline CCC proline CCA proline CCG proline	CAU histidine CAC histidine CAA glutamine CAG glutamine	CGU arginine CGC arginine CGA arginine CGG arginine
AUU isoleucine AUC isoleucine AUA isoleucine AUG methionine (start)	ACU threonine ACC threonine ACA threonine ACG threonine	AAU asparagine AAC asparagine AAA lysine AAG lysine	AGU serine AGC serine AGA arginine AGG arginine
GUU valine GUC valine GUA valine GUG valine	GCU alanine GCC alanine GCA alanine GCG alanine	GAU aspartic acid GAC aspartic acid GAA glutamic acid GAG glutamic acid	GGU glycine GGC glycine GGA glycine GGG glycine

△ The genetic code explains how sets of three nucleotides code for amino acids. This code is stored in DNA, then transferred to messenger RNA (mRNA), from which new proteins are synthesized. RNA (ribonucleic acid) is chemically very similar to DNA and also contains four chemical letters. But there is one major difference: where DNA uses thymine (T), mRNA uses uracil (U).

The table above reveals all possible messenger RNA triplets and the amino acids they specify. For example, the mRNA triplet UUU codes for the amino acid phenylalanine. Note that most amino acids may be encoded by more than one mRNA triplet.



Folded Protein

△ Some proteins are synthesized at a constant rate, while others are made only in response to the body's need.

What is a protein?

Name three proteins in your body and describe what they do.

What is meant by the detailed, three-dimensional structure of proteins?

What do we learn from studying the structures of proteins?

Describe the protein folding problem.

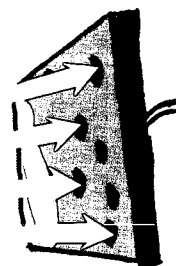
## *X-Ray Crystallography: Art Marries Science*

**H**ow would you examine the shape of something too small to see in even the most powerful microscope? Scientists trying to visualize the complex arrangement of atoms within molecules have exactly that problem, so they solve it indirectly. By using a large collection of identical molecules—often proteins—along with specialized equipment and computer modeling techniques, scientists are able to calculate what an isolated molecule would look like.

The two most common methods used to investigate molecular structures are X-ray crystallography (also called X-ray diffraction) and nuclear magnetic resonance (NMR) spectroscopy. Researchers using X-ray crystallography grow solid crystals of the molecules they study. Those using NMR study molecules in solution. Each technique has advantages and disadvantages. Together, they provide researchers with a precious glimpse into the structures of life.

About 80 percent of the protein structures that are known have been determined using X-ray crystallography. In essence, crystallographers aim high-powered X-rays at a tiny crystal containing trillions of identical molecules. The crystal scatters the X-rays onto an electronic detector like a disco ball spraying light across a dance floor. The electronic detector is the same type used to capture images in a digital camera.

After each blast of X-rays, lasting from a fraction of a second to several hours, the researchers precisely rotate the crystal by entering its desired orientation into the computer that controls the X-ray apparatus. This enables the scientists to capture in three dimensions how the crystal scatters, or diffracts, X-rays.



X-Ray Beam

Crystal

Scattered X-Rays

Detector

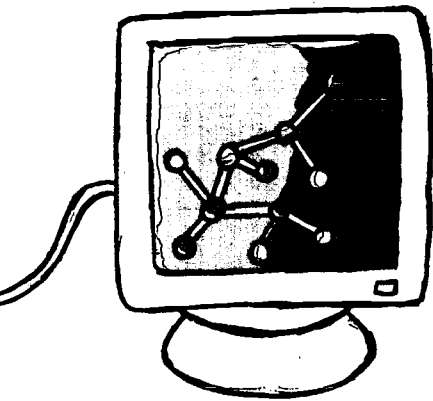
## *The First X-Ray Structure: Myoglobin*

The intensity of each diffracted ray is fed into a computer, which uses a mathematical equation called a Fourier transform to calculate the position of every atom in the crystallized molecule.

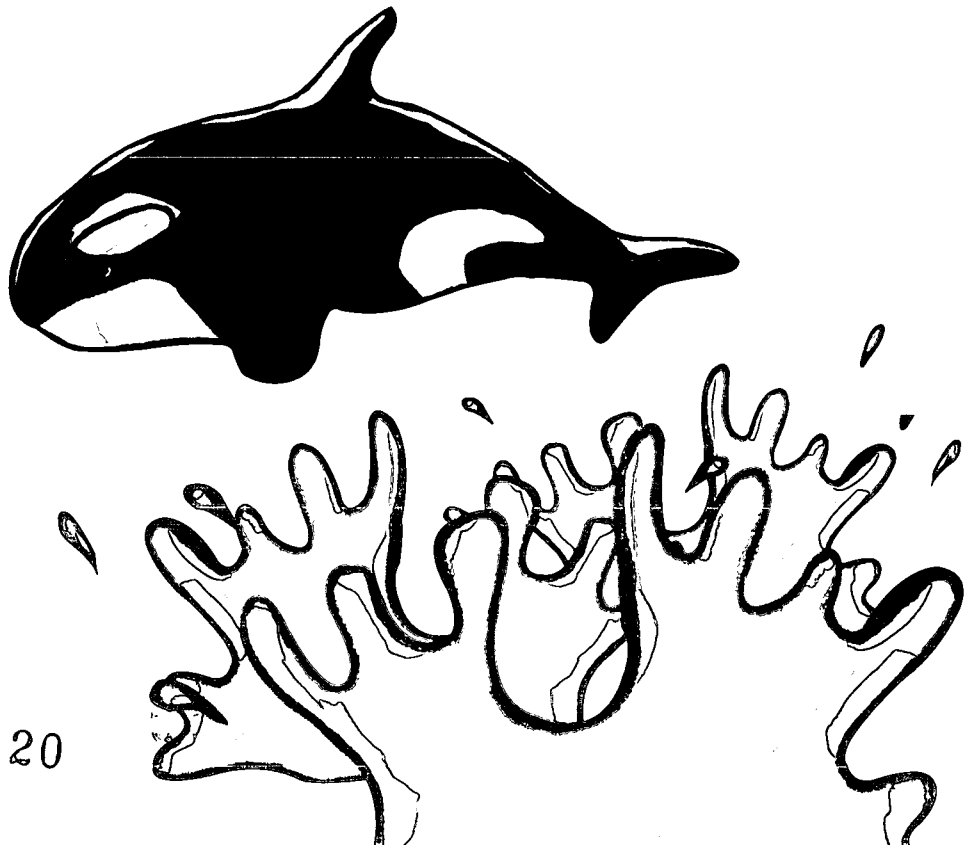
The result—the researchers' masterpiece—is a three-dimensional digital image of the molecule. This image represents the physical and chemical properties of the substance and can be studied in intimate, atom-by-atom detail using sophisticated computer graphics software.

The first time researchers glimpsed the complex internal structure of a protein was in 1959, when John Kendrew, working at Cambridge University, determined the structure of myoglobin using X-ray crystallography.

Myoglobin, a molecule similar to but smaller than hemoglobin, stores oxygen in muscle tissue. It is particularly abundant in the muscles of diving mammals such as whales, seals, and dolphins, which need extra supplies of oxygen to remain submerged for long periods of time. In fact, it is up to nine times more abundant in the muscles of these sea mammals than it is in the muscles of land animals.



Computed Image of Atoms in Crystal

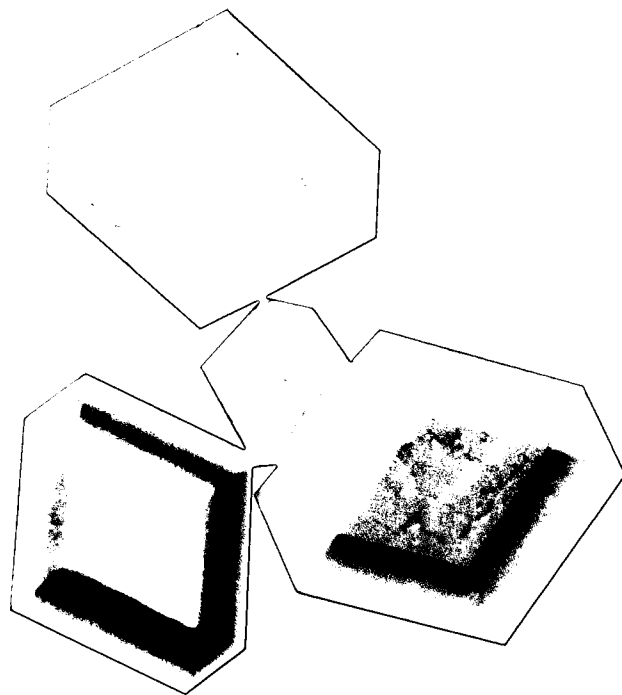


### Crystal Cookery

An essential step in X-ray crystallography is growing high-quality crystals. The best crystals are pure, perfectly symmetrical, three-dimensional repeating arrays of precisely packed molecules. They can be different shapes, from perfect cubes to long needles. Most crystals used for these studies are barely visible (less than 1 millimeter on a side). But the larger the crystal, the more accurate the data and the more easily scientists can solve the structure.

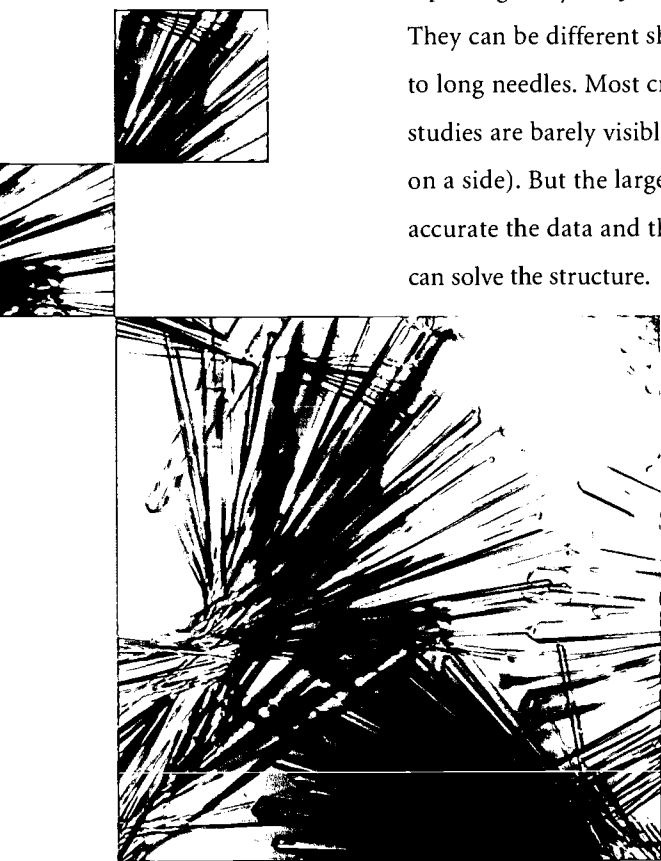
Crystallographers grow their tiny crystals in plastic dishes. They usually start with a highly concentrated solution containing the molecule. They then mix this solution with a variety of specially prepared liquids to form tiny droplets (1-10 microliters).

Each droplet is kept in a separate plastic dish or well. As the liquid evaporates, the molecules in the solution become progressively more concentrated. During this process, the molecules arrange into a precise, three-dimensional pattern and eventually into a crystal—if the researcher is lucky.




Sometimes, crystals require months or even years to grow. The conditions—temperature, pH (acidity or alkalinity), and concentration—must be perfect. And each type of molecule is different, requiring scientists to tease out new crystallization conditions for every new sample.

Even then, some molecules just won't cooperate. They may have floppy sections that wriggle around too much to be arranged neatly into a crystal. Or, particularly in the case of proteins that are normally embedded in oily cell membranes, the molecule may fail to completely dissolve in the solution.



## Calling All Crystals



Although the crystals used in X-ray crystallography are barely visible to the naked eye, they contain a vast number of precisely ordered, identical molecules. A crystal that is 0.5 millimeters on each side contains around 1,000,000,000,000,000 (or  $10^{15}$ ) medium-sized protein molecules.

When the crystals are fully formed, they are placed in a tiny glass tube or scooped up with a loop made of nylon, human hair, or other material depending on the preference of the researcher. The tube or loop is then mounted in the X-ray apparatus, directly in the path of the X-ray beam.

The searing force of powerful X-ray beams can burn holes through a crystal left too long in their path. To minimize radiation damage, researchers flash-freeze their crystals in liquid nitrogen.

Some crystallographers keep their growing crystals in air-locked chambers, to prevent any misdirected breath from disrupting the tiny crystals. Others insist on an environment free of vibrations—in at least one case, from rock-and-roll music. Still others joke about the phases of the moon and supernatural phenomena. As the jesting suggests, growing crystals remains the most difficult and least predictable part of X-ray crystallography. It's what blends art with the science.

Crystal photos courtesy of Alex McPherson,  
University of California, Irvine



## STUDENT SNAPSHOT

## *Science Brought One Student From the Coast of Venezuela to the Heart of Texas*

“Science is like a roller coaster. You start out very excited about what you’re doing. But if your experiments don’t go well for a while, you get discouraged. Then, out of nowhere, comes this great data and you are up and at it again.”

That’s how Juan Chang describes the nature of science. He majored in biochemistry and computer science at the University of Texas at Austin. He also worked in the UT-Austin laboratory of X-ray crystallographer Jon Robertus.

Chang studied a protein that prevents cells from committing suicide. As a sculptor chips and shaves off pieces of marble, the body uses cellular suicide, also called “apoptosis,” during normal development to shape features like fingers and toes. To protect healthy cells, the body also triggers apoptosis to kill cells that are genetically damaged or infected by viruses.

By understanding proteins involved in causing or preventing apoptosis, scientists hope to control



Marsha Miller, University of Texas at Austin

the process in special situations—to help treat tumors and viral infections by promoting the death of damaged cells, and to treat degenerative nerve diseases by preventing apoptosis in nerve cells. A better understanding of apoptosis may even allow researchers to more easily grow tissues for organ transplants.

Chang was part of this process by helping to determine the X-ray crystal structure of his protein,

“Science is like a roller coaster. You start out very excited about what you’re doing. But if your experiments don’t go well for a while, you get discouraged. Then, out of nowhere, comes this great data and you are up and at it again.”

Juan Chang  
Graduate Student  
Baylor College of Medicine

which scientists refer to as ch-IAP1. He used biochemical techniques to obtain larger quantities of his purified protein. The next step will be to crystallize the protein, then to use X-ray diffraction to obtain its detailed, three-dimensional structure.

Chang came to Texas from a lakeside town on the northwest tip of Venezuela. He first became interested in biological science in high school. His class took a field trip to an island off the Venezuelan coast to observe the intricate ecological balance of the beach and coral reef. He was impressed at how the plants and animals—crabs, insects, birds, rodents, and seaweed—each adapted to the oceanside wind, waves, and salt.

About the same time, his school held a fund drive to help victims of Huntington’s disease, an incurable genetic disease that slowly robs people of their ability to move and think properly.

The town in which Chang grew up, Maracaibo, is home to the largest known family with Huntington’s disease. Through the fund drive, Chang became interested in the genetic basis of inherited diseases.

His advice for anyone considering a career in science is to “get your hands into it” and to experiment with work in different fields. He was initially interested in genetics, did biochemistry research, and is now in a graduate program at Baylor College of Medicine. The program combines structural and computational biology with molecular biophysics. He anticipates that after earning a Ph.D., he will become a professor at a university.

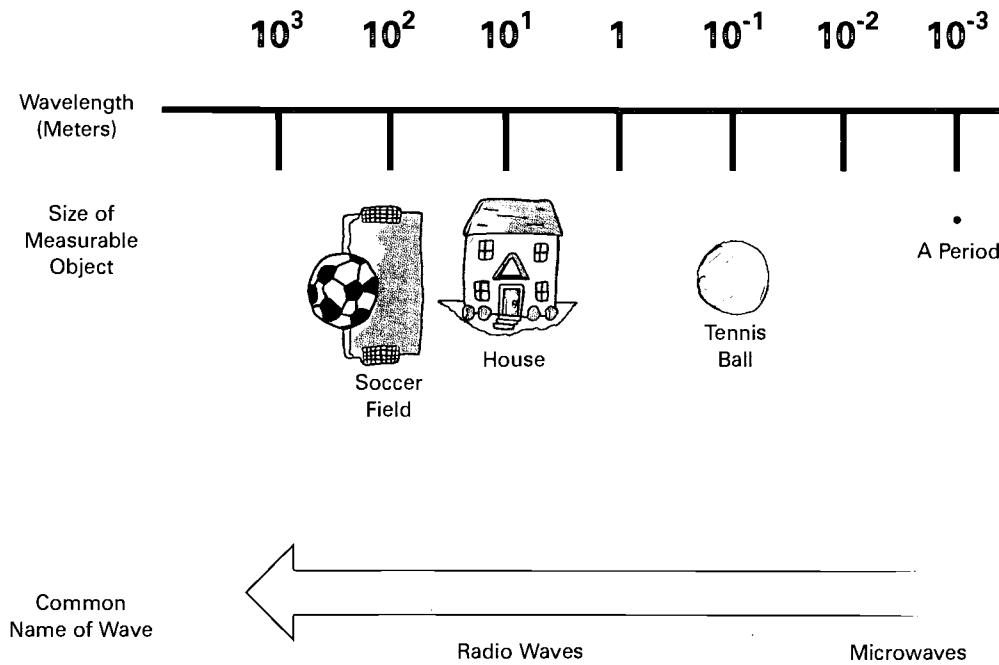
**Why X-Rays?**

In order to measure something accurately, you need the appropriate ruler. To measure the distance between cities, you would use miles or kilometers. To measure the length of your hand, you would use inches or centimeters.

Crystallographers measure the distances between atoms in angstroms. One angstrom equals one ten-billionth of a meter, or  $10^{-10}$  m. That's

more than 10 million times smaller than the diameter of the period at the end of this sentence.

The perfect “rulers” to measure angstrom distances are X-rays. The type of X-rays used by crystallographers are approximately 0.5 to 1.5 angstroms long—just the right size to measure the distance between atoms in a molecule. There is no better place to generate such X-rays than in a synchrotron.

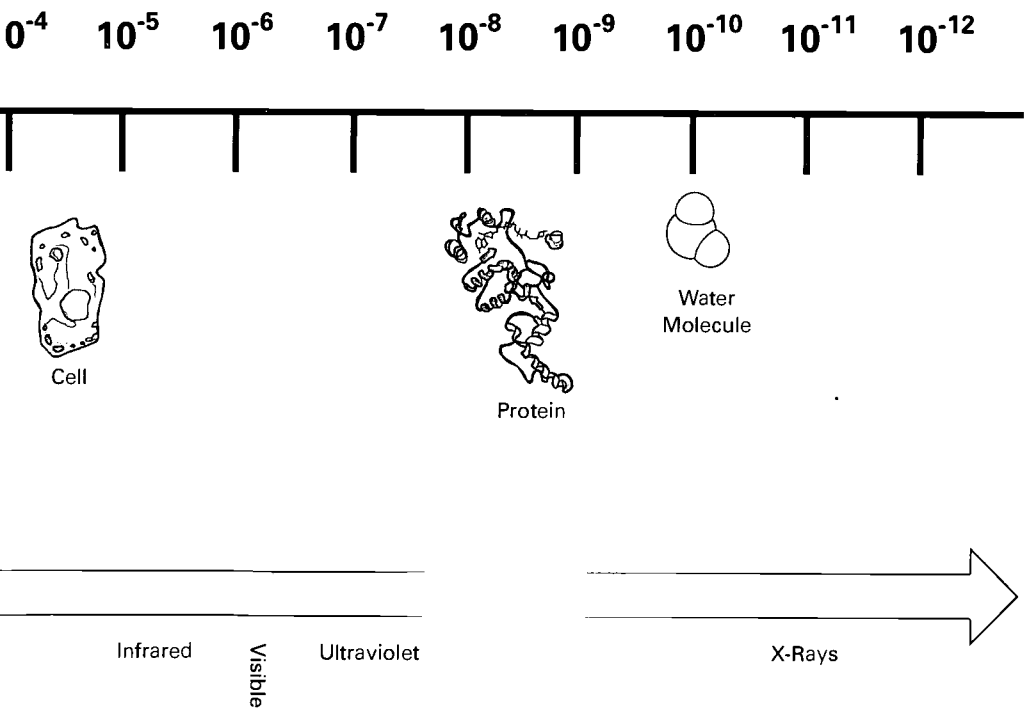


ERIC  
Full Text Provided by ERIC

**Synchrotron Radiation—One of the Brightest Lights on Earth**

Imagine a beam of light 30 times more powerful than the Sun, focused on a spot smaller than the head of a pin. It carries the blasting power of a meteor plunging through the atmosphere. And it is the single most powerful tool available to X-ray crystallographers.

This light, one of the brightest lights on earth, is not visible to our eyes. It is made of X-ray beams generated in large machines called synchrotrons. These machines accelerate electrically charged particles, often electrons, to nearly the speed of light, then whip them around a huge, hollow metal ring.



◁ When using light to measure an object, the wavelength of the light needs to be similar to the size of the object. X-rays, with wavelengths of approximately 0.5 to 1.5 angstroms, can measure the distance between atoms. Visible light, with a wavelength of 4,000 to 7,000 angstroms, is used in ordinary light microscopes because it can measure objects the size of cellular components.



△ The Advanced Photon Source (APS) at Argonne National Laboratory near Chicago is a “third-generation” synchrotron radiation facility. Biologists were considered parasitic users on the “first-generation” synchrotrons, which were built for physicists studying subatomic particles. Now, many synchrotrons, such as the APS, are designed specifically to optimize X-ray production and support the research of scientists in a variety of fields, including biology.

Synchrotrons were originally designed for use by high-energy physicists studying subatomic particles and cosmic phenomena. Other scientists soon clustered at the facilities to snatch what the physicists considered an undesirable byproduct—brilliant bursts of X-rays.

The largest component of each synchrotron is its electron storage ring. This ring is actually not a perfect circle, but a many-sided polygon. At each corner of the polygon, precisely aligned magnets bend the electron stream, forcing it to stay in the ring (on their own, the particles would travel straight ahead and smash into the ring’s wall). Each time the electrons’ path is bent, they emit bursts of energy in the form of electromagnetic radiation.

This phenomenon is not unique to electrons or to synchrotrons. Whenever any charged particle changes speed or direction, it emits energy. The type of energy, or radiation, that particles emit depends on the speed the particles are going and how sharply they are bent. Because particles in a synchrotron are hurtling at nearly the speed of light, they emit intense radiation, including lots of high-energy X-rays.

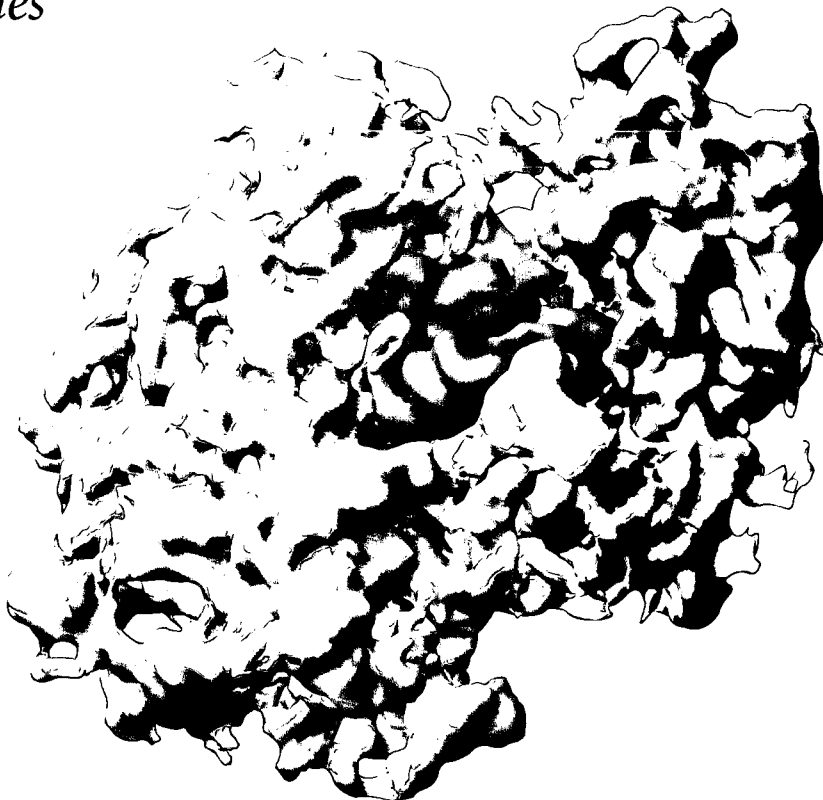
## Peering Into Protein Factories

Ribosomes make the stuff of life. They are the protein factories in every living creature, and they churn out all proteins ranging from bacterial toxins to human digestive enzymes.

To most people, ribosomes are extremely small—tens of thousands of ribosomes would fit on the sharpened tip of a pencil. But to a structural biologist, ribosomes are huge. They contain three or four strands of RNA and more than 50 small proteins. These many components work together like moving parts in a complex machine—a machine so large that it has been impossible to study in structural detail until recently.

In 1999, researchers determined the crystal structure of a complete ribosome for the first time. This snapshot, although it was not detailed enough to reveal the location of individual atoms, did show how various parts of the ribosome fit together and where within a ribosome new proteins are made. As increasingly detailed ribosome structures become available, they will show, at an atomic level, how proteins are made.

In addition to providing valuable insights into a critical cellular component and process, structural studies of ribosomes may lead to clinical applications. Many of today's antibiotics work by interfering with the function of ribosomes in harmful bacteria while leaving human ribosomes alone. A more detailed knowledge of the structural differences between bacterial and human ribosomes may help scientists develop new antibiotic drugs or improve existing ones.



△ The first structural snapshot of an entire bacterial ribosome. The structure, which is the largest determined by X-ray crystallography to date, will help researchers better understand the fundamental process of protein production. It may also aid efforts to design new antibiotic drugs or optimize existing ones.

Ribosome structure courtesy of Jamie Cate, Marat Yusupov, Gulnara Yusupova, Thomas Earnest, and Harry Noller. Graphic courtesy of Albion Baucom, University of California, Santa Cruz.

The work was also a technical triumph for crystallography. The ribosome was much larger than any other irregular structure previously determined. (Some equally large virus structures have been obtained, but the symmetry of these structures greatly simplified the process.) Now that the technique has been worked out, researchers are obtaining increasingly detailed pictures of the ribosome—ones in which they can pinpoint every atom.



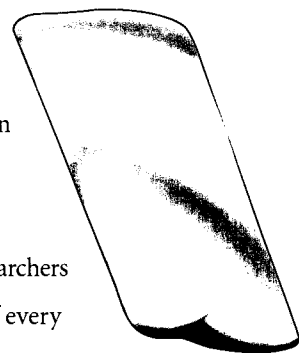
**Scientists Get MAD at the Synchrotron**

- Ⓐ Berkeley, CA
- Ⓑ Menlo Park, CA
- Ⓒ Baton Rouge, LA
- Ⓓ Argonne, IL
- Ⓔ Upton, NY
- Ⓕ Ithaca, NY

Synchrotrons are prized not only for their ability to generate brilliant X-rays, but also for the “tunability” of these rays. Scientists can actually select from these rays just the right wavelength for their experiments.

In order to determine the structure of a molecule, crystallographers usually have to compare several versions of a crystal—one pure crystal and several others in which the crystallized molecule is soaked in, or “doped” with, a different heavy metal, like mercury, platinum, or uranium.

Because these heavy metal atoms contain many electrons, they scatter X-rays more than do the smaller, lighter atoms found in biological molecules. By comparing the X-ray scatter patterns of a pure crystal with those of various metal-containing crystals, the researchers can determine the location of the metals in the crystal. These metal atoms serve as landmarks that enable researchers to calculate the position of every other atom in the molecule.



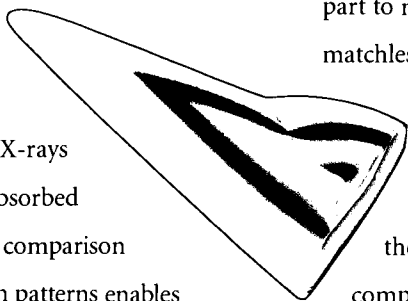
△ There are half a dozen major synchrotrons used for X-ray crystallography in the United States.



But when using X-ray radiation from the synchrotron, researchers do not have to grow multiple versions of every crystallized molecule—a huge savings in time and money. Instead, they grow only one type of crystal which contains the chemical element selenium instead of sulfur in every methionine amino acid. They then “tune” the wavelength of the synchrotron beam to match certain properties of selenium. That way, a single crystal serves the purpose of several different metal-containing crystals. This technique is called MAD, for Multi-wavelength Anomalous Diffraction.

Using MAD, the researchers bombard the selenium-containing crystals three or four different times, each time with X-ray beams of a different wavelength—including one blast with X-rays of the exact wavelength absorbed by the selenium atoms. A comparison of the resulting diffraction patterns enables researchers to locate the selenium atoms, which again serve as markers, or reference points, around which the rest of the structure is calculated.

The brilliant X-rays from synchrotrons allow researchers to collect their raw data much more quickly than when they use traditional X-ray

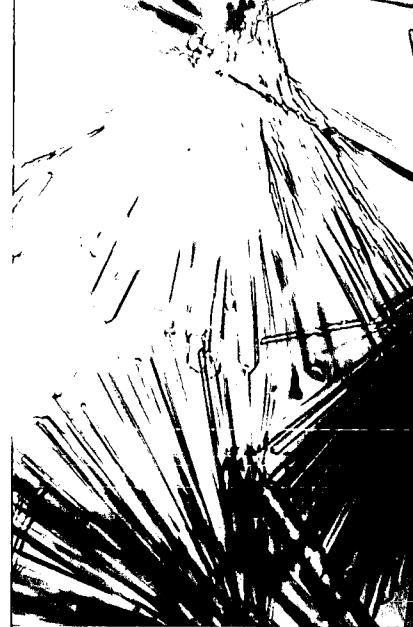


sources, which are small enough to fit on a long laboratory table and produce much weaker X-rays than do synchrotrons. What used to take weeks or months in the laboratory can be done in minutes at a synchrotron. But then the data still must be analyzed by computers and the scientists, refined, and corrected before the protein can be visualized in its three-dimensional structural splendor.

The number and quality of molecular structures determined by X-ray diffraction has risen sharply in recent years, as has the percentage of these structures obtained using synchrotrons. This trend promises to continue, due in large part to new techniques like MAD and to the matchless power of synchrotron radiation.

In addition to revealing the atomic architecture of biological molecules, synchrotrons are used by the electronics industry to develop new computer chips, by the petroleum industry to develop new catalysts for refining crude oil and to make byproducts like plastics, and in medicine to study progressive bone loss.

Crystal photos courtesy of Alex McPherson, University of California, Irvine



Got It?

What is X-ray crystallography?

Give two reasons why synchrotrons are so valuable to X-ray crystallographers.

What is a ribosome and why is it important to study?

## *The World of NMR: Magnets, Radio Waves, and Detective Work*

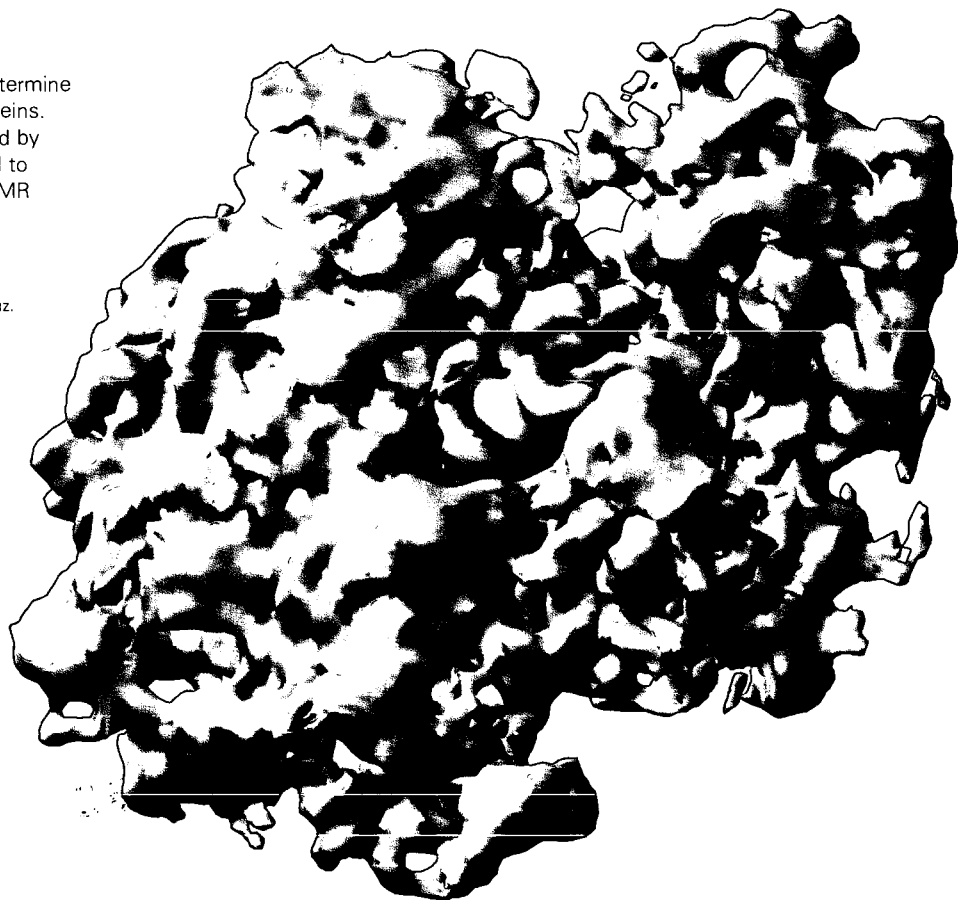
“Most atoms in biological molecules have a little magnet inside them. If we put any of these molecules in a big magnet, all the little magnets in the molecule will orient themselves to line up with the big magnet,” allowing scientists to probe various properties of the molecule. That’s how Angela Gronenborn describes the technique of nuclear magnetic resonance spectroscopy, or NMR. Gronenborn is a researcher at the National Institutes of Health who uses NMR to determine the structure of proteins involved in HIV infection, in the immune response, and in “turning on” genes.

Next to X-ray diffraction, NMR is the most common technique used to determine detailed molecular structures. This technique, which has nothing to do with nuclear reactors or nuclear bombs, is based on the same principle as the magnetic resonance imaging (MRI) machines that allow doctors to see tissues and organs such as the brain, heart, and kidneys.

Although NMR is used for a variety of medical and scientific purposes—including determining the structure of genetic material (DNA and RNA), carbohydrates, and other molecules—in this booklet we will focus on using NMR to determine the structure of proteins.

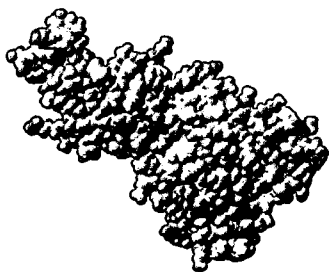
- ▶ Currently, NMR spectroscopy is only able to determine the structures of small and medium-sized proteins. Shown here is the largest structure determined by X-ray crystallography (the ribosome) compared to one of the largest structures determined by NMR spectroscopy.

Ribosome structure courtesy of Jamie Cate, Marat Yusupov, Gulnara Yusupova, Thomas Earnest, and Harry Noller. Graphic courtesy of Albion Baucom, University of California, Santa Cruz.



Methods for determining structures by NMR spectroscopy are much younger than those that use X-ray crystallography. As such, they are constantly being refined and improved. “NMR structure determination is still an evolving field,” says Gronenborn. “Yes, we’re 20 years behind X-ray crystallography, but it’s very exciting. There are new discoveries and techniques every year. This should be really interesting for young people going into science.”

The most obvious area in which NMR lags behind X-ray crystallography is the size of the structures it can handle. The largest structures NMR spectroscopists have determined are 30 to 40 kilodaltons (270 to 360 amino acids). X-ray crystallographers have solved rough structures of up to 2,500 kilodaltons—60 times as large.



“NMR structure determination is still an evolving field.

Yes, we’re 20 years behind X-ray crystallography, but it’s very exciting. There are new discoveries and techniques every year. This should be really interesting for young people going into science,” says Gronenborn.

But NMR also has advantages over crystallography. For one, it uses molecules in solution, so it is not limited to those that crystallize well. (Remember that crystallization is often the most uncertain and time-consuming step in X-ray crystallography.)

NMR also makes it fairly easy to study properties of a molecule besides its structure—such as the flexibility of the molecule and how it interacts with other molecules. With crystallography, it is often either impossible to study these aspects or it requires an entirely new crystal. Using NMR and crystallography together gives researchers a more complete picture of a molecule and its functioning than either tool alone.

NMR relies on the interaction between an applied magnetic field and the natural “little magnets” in certain atomic nuclei. For protein structure determination, spectroscopists concentrate on the atoms that are most common in proteins, namely hydrogen, carbon, and nitrogen.

Before the researchers begin to determine a protein’s structure, they already know its amino acid sequence—the names and order of all of its amino acid building blocks. What they seek to learn through NMR is how this chain of amino acids wraps and folds around itself to create the three-dimensional, active protein.

Solving a protein structure using NMR is like a good piece of detective work. The researchers conduct a series of experiments, each of which provides partial clues about the nature of the

atoms in the sample molecule—such as how close two atoms are to each other, whether these atoms are physically bonded to each other, or where the atoms lie within the same amino acid. Other experiments show links between adjacent amino acids or reveal flexible regions in the protein.

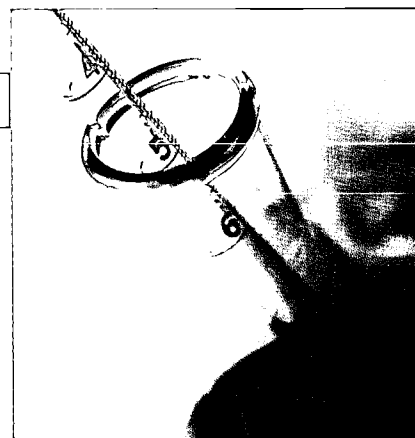
The challenge of NMR is to employ several sets of such experiments to tease out properties unique to each atom in the sample. Using computer programs, NMR spectroscopists can get a rough idea of the protein’s overall shape and can see possible arrangements of atoms in its different parts. Each new set of experiments further refines these possible structures. Finally, the scientists carefully select 20 to 40 solutions that best represent their experimental data and present the average of these solutions as their final structure.

### *NMR Spectroscopists Use Tailor-Made Proteins*

Only certain forms, or isotopes, of each chemical element have the correct magnetic properties to be useful for NMR. Perhaps the most familiar isotope is  $^{14}\text{C}$ , which is used for archeological and geological dating.

You may also have heard about isotopes in the context of radioactivity. Neither of the isotopes most commonly used in NMR, namely  $^{13}\text{C}$  and  $^{15}\text{N}$ , is radioactive.

Like many other biological scientists, NMR spectroscopists (and X-ray crystallographers) use harmless laboratory bacteria to produce proteins for their studies. They insert into these bacteria the gene that codes for the protein under study. This forces the bacteria, which grow and multiply in swirling flasks, to produce large amounts of tailor-made proteins.



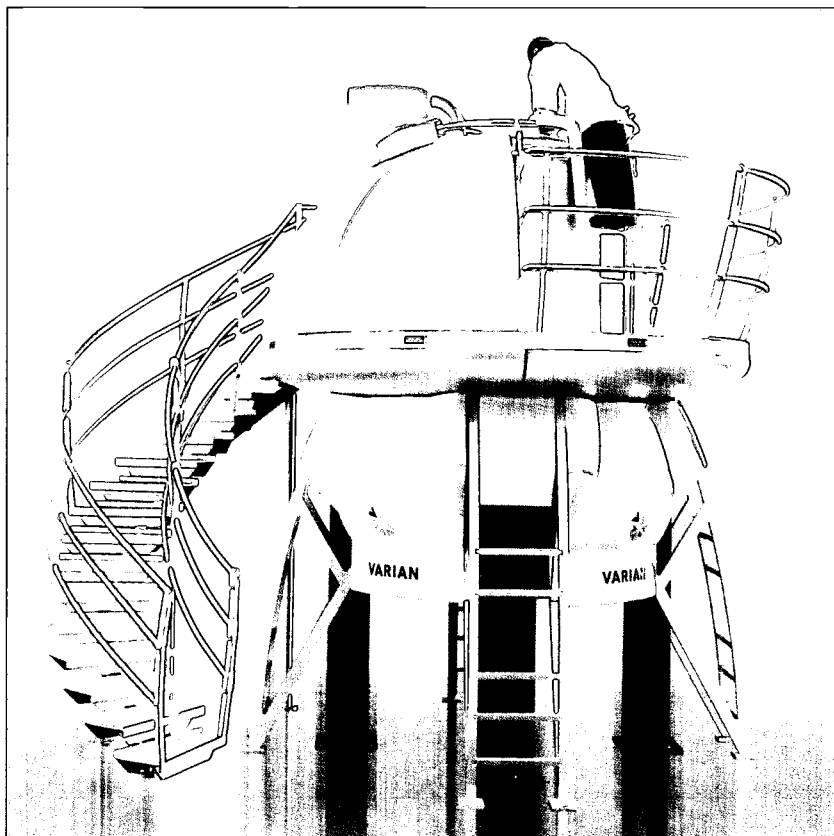
To generate proteins that are “labeled” with the correct isotopes, NMR spectroscopists put their bacteria on a special diet. If the researchers want proteins labeled with  $^{13}\text{C}$ , for example, the bacteria are fed food containing  $^{13}\text{C}$ . That way, the isotope is incorporated into all the proteins produced by the bacteria.

## *NMR Magic Is in the Magnets*

The magnets used for NMR are incredibly strong. Most range in strength from 500 megahertz (11.7 tesla) to 800 megahertz (18.8 tesla). That's hundreds of times stronger than the magnetic field on Earth's surface. Researchers are always eager for ever-stronger magnets because these give NMR more sensitivity and higher resolution.

While the sample is exposed to a strong magnetic field, outside most NMR magnets used in structure determination, the field is fairly weak. If you stand next to a very powerful NMR magnet, the most you may feel is a slight tug on hair clips or zippers. But do not bring your watch or wallet—NMR magnets are notorious for stopping analog watches and erasing the magnetic strips on credit cards.

NMR magnets are superconductors, so they must be cooled with liquid helium, which is kept at 4 Kelvin (-452 degrees Fahrenheit). Liquid nitrogen, which is kept at 77 Kelvin (-321 degrees Fahrenheit), helps keep the liquid helium cold.



Varian NMR Systems

△ Most NMR spectroscopists use magnets that are 500 megahertz to 800 megahertz. This magnet is 900 megahertz—the strongest one available.

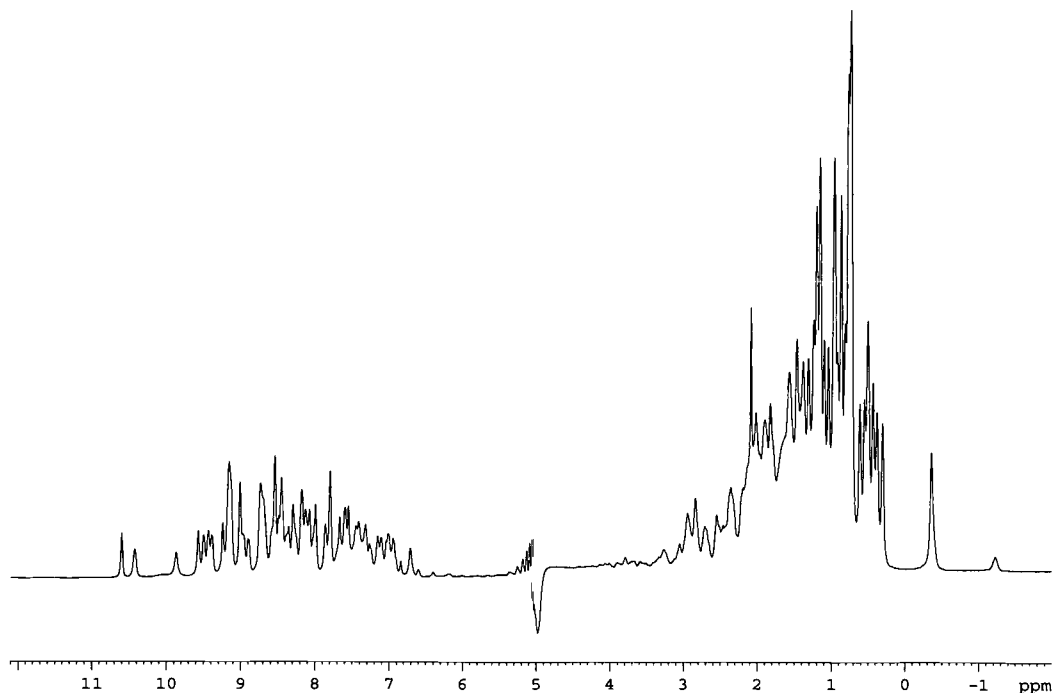
### The Many Dimensions of NMR

To begin a series of NMR experiments, researchers insert a slender glass tube containing about a half a milliliter of their sample into a powerful, specially designed magnet. The natural magnets in the sample's atoms line up with the NMR magnet just as iron filings line up with a toy magnet. The researchers then blast the sample with a series of split-second radio wave pulses that disrupt this magnetic equilibrium in the nuclei of selected atoms.

By observing how these nuclei react to the radio waves, researchers can assess their chemical nature. Specifically, researchers measure a property of the atoms called chemical shift.

Every type of NMR-active atom in the protein has a characteristic chemical shift. Over the years, NMR spectroscopists have discovered characteristic chemical shift values for different atoms (for example, the carbon in the center of an amino acid, or its neighboring nitrogen), but the exact values are unique in each protein. Chemical shift values depend on the local chemical environment of the atomic nucleus, such as the number and type of chemical bonds between neighboring atoms.

The pattern of these chemical shifts is displayed as a series of peaks on a computer screen. This one-dimensional NMR spectrum usually contains clusters of overlapping peaks, making it nearly impossible for scientists to analyze the information it contains.



▲ This one-dimensional NMR spectrum shows the chemical shifts of hydrogen atoms in a protein from streptococcal bacteria. Each peak corresponds to one or more hydrogen atoms in the molecule.

The higher the peak, the more hydrogen atoms it represents. The position of the peaks on the horizontal axis shows how much energy is required to align those hydrogens with the magnetic field.

Spectrum courtesy of Ramon Campos-Olivas, National Institutes of Health

To determine protein structures, NMR spectroscopists use a technique called multi-dimensional NMR. This technique combines several sets of experiments, which spreads out the data into discrete spots. The location of each spot indicates unique properties of one atom in the sample. The researchers must then label each spot with the identity of the atom to which it corresponds.

For a small to medium-sized protein, accurately assigning each spot to a particular atom in the protein molecule may take 3 to 6 months—even with some help from computers. For a large, complex protein, it could take up to a year.

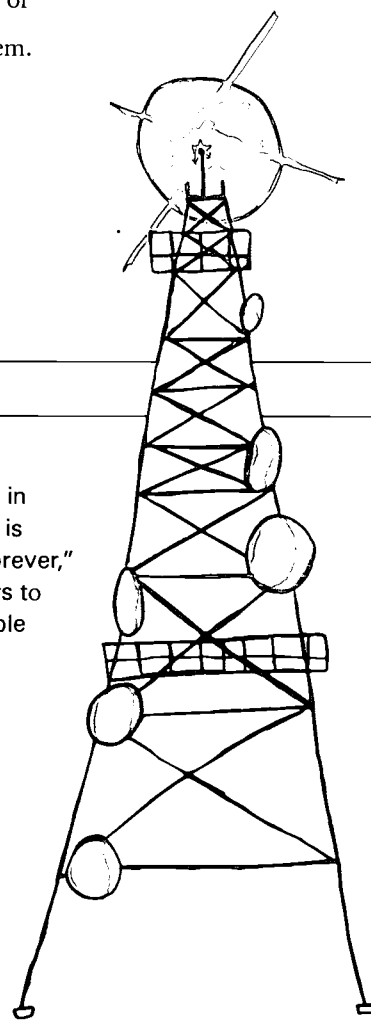
To better understand multi-dimensional NMR, we can think of an encyclopedia. If all the words in the encyclopedia were condensed into one dimension, the result would be a single, illegible line of text blackened by countless overlapping letters. Expand this line to two dimensions—a page—and you still have a jumbled mess of superimposed words. Only by expanding into multiple volumes is it possible to read all the information in the encyclopedia. In the same way, more complex NMR studies require experiments in three or four dimensions to clearly solve the problem.

### *NMR Tunes in on Radio Waves*

Each NMR experiment is composed of hundreds of radio wave pulses, with each pulse up to a few milliseconds after the previous one. Scientists enter the experiment they'd like to run into a computer, which then precisely times the pulses it sends to the sample and collects the resulting data.

This process can require as little as 20 minutes for a single, simple experiment. For a complex molecule, data collection could take weeks or months.

NMR's radio wave pulses are quite tame compared to the high-energy X-rays used in crystallography. In fact, if an NMR sample is prepared well, it should be able to last "forever," says Gronenborn, allowing the researchers to conduct further studies on the same sample at a later time.





### **Spectroscopists Get NOESY for Structures**

To determine the arrangement of the atoms in the molecule, the scientists use a multi-dimensional NMR technique called NOESY (pronounced “nosy”) for Nuclear Overhauser Effect Spectroscopy. This technique works best on the nuclei of hydrogen atoms, which have the strongest NMR signal and are the most common atomic nuclei in biological systems. They are also the simplest—each hydrogen nucleus contains just a single proton.

The NOESY experiment reveals how close different protons are to each other in space. A pair of protons very close together (typically within 3 angstroms) will give a very strong NOESY signal. More separated pairs of protons will give weaker signals, out to the limit of detection for the technique, which is about 6 angstroms.

From there, the scientists (or, to begin with, their computers) must determine how the atoms are arranged in space. It’s like solving a complex, three-dimensional puzzle with thousands of pieces.

### **A Detailed Structure: Just the Beginning**

Although a detailed, three-dimensional structure of a protein is extremely valuable to show scientists what the molecule looks like, it is really only a static “snapshot” of the protein frozen in one position. Proteins themselves are not rigid or static—they are dynamic molecules that can partially unravel,

“I believe that structure is really a beginning and not an end of studying a molecule,” said Gronenborn.

fold more tightly, or change shape in response to their environment. Some proteins even remain partially unfolded until they bind to their biological target. NMR researchers can explore some of these internal molecular motions by altering the solvent used to dissolve the protein.

A three-dimensional NMR structure often merely provides the framework for more in-depth studies. After you have the structure, you can easily probe features that reveal the molecule’s role and behavior in the body, including its flexibility, its interactions with other molecules, and how it reacts to changes in temperature, acidity, and other conditions.



## Untangling Protein Folding

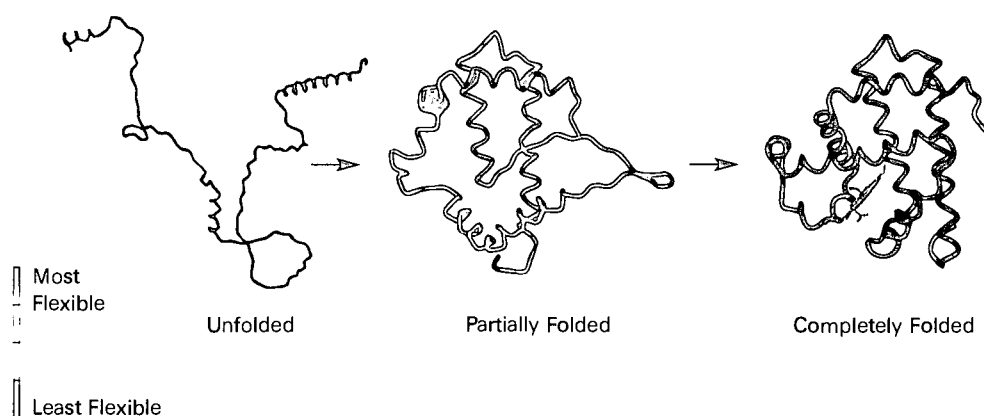
A hundred billion years—that's the time scientists estimate it could take for a small protein to fold randomly into its active shape. But somehow, Nature does it in a tenth of a second.

Understanding how proteins fold so quickly and correctly (most of the time) is more than just a scientific challenge. Dozens of diseases are known or suspected to result from misfolded proteins. In addition, one of the greatest challenges for the biotechnology industry is to coax bacteria into making vast quantities of properly folded human proteins.

NMR is unsurpassed in its ability to teach scientists about how proteins fold. Most proteins start out like a loose string flopping around in a lake, possibly with short coiled sections. The molecules contort quickly into various partially folded states before congealing into their final form. Because the process is so fast, scientists cannot study it directly. Instead, they reverse and interrupt the process.

Scientists can force a protein to unfold by increasing the acidity of, raising the temperature of, or adding certain molecules to its liquid environment. By capturing a protein in different stages of unraveling, researchers hope to understand how proteins fold normally.

H. Jane Dyson and Peter Wright, a husband-and-wife team of NMR spectroscopists at the Scripps Research Institute in La Jolla, California, used this technique to study myoglobin in various folding states.



▲ Myoglobin, a small molecule that stores oxygen in muscle tissue, is an ideal protein for studying the structure and dynamics of protein folding. It quickly folds into a compact, alpha-helical structure. Dyson and Wright used changes in acidity to reveal which regions are most flexible in different folding states. The first two "structures" show one of many possible conformations for a floppy, partially folded molecule.

Adapted with permission from *Nature Structural Biology* 1998, 5:499–503

Most proteins fold almost immediately after they are made. Some do not fold completely until they contact a target molecule. Others must partially unfold to cross a cell membrane, then refold on the other side. This last group includes the hundreds of proteins that leave their parent cell to circulate in the bloodstream—hormones, blood clotting factors, and immune system proteins. Studies of protein folding provide valuable insight into these basic life processes.

## STUDENT SNAPSHOT

*The Sweetest Puzzle*

“Getting a protein structure using NMR is a lot of fun,” says Chele DeRider, a graduate student at the University of Wisconsin-Madison. “You’re given all these pieces to a puzzle and you have to use a set of rules, common sense, and intuitive thinking to put the pieces together. And when you do, you have a protein structure.”

DeRider is working at UW-Madison’s national NMR facility. She is refining the structure of brazzein, a small, sweet protein. Most sweet-tasting molecules are sugars, not proteins; so brazzein is quite unusual. It also has other remarkable properties that make it attractive as a sugar substitute. It is 2,000 times sweeter than table sugar—with many fewer calories. And, unlike aspartame (NutraSweet®), it stays sweet even after 2 hours at nearly boiling temperatures.



Jeff Miller, University of Wisconsin-Madison

In addition to its potential impact in the multimillion-dollar market of sugar substitutes, brazzein may teach scientists how we perceive some substances as sweet. Researchers know which amino acids in brazzein are responsible for its taste—changing a single one can either enhance or eliminate this flavor—but they are still investigating how these amino acids react with tongue cells to trigger a sensation of sweetness.

“Getting a protein structure using NMR is a lot of fun . . . .

You start out with just dots on a page  
and you end up with a protein structure.”

Chele DeRider  
Graduate Student  
University of Wisconsin-Madison

DeRider became interested in NMR as an undergraduate student at Macalester College in St. Paul, Minnesota. She was studying organic chemistry, but found that she spent most of her time running NMR spectra on her compounds.

“I realized that’s what I liked most about my research,” she says.

After she finishes her graduate work, DeRider plans to obtain a postdoctoral fellowship to continue using NMR to study protein structure and then to teach at a small college similar to her *alma mater*.

Give one advantage and one disadvantage of NMR when compared to X-ray crystallography.

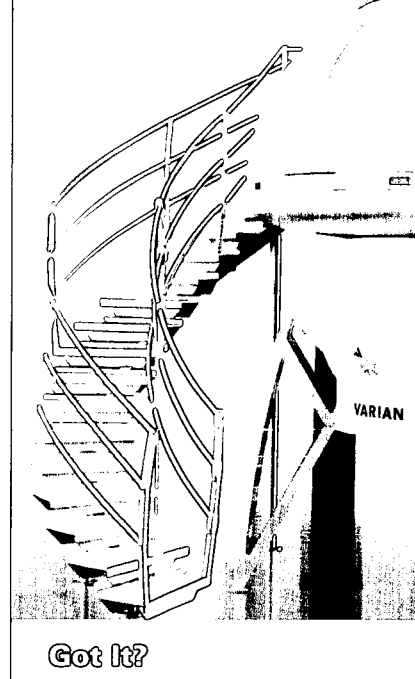
What do NMR spectroscopists learn from a NOESY experiment?

Why is it important to study protein folding?



H.M. Hadik

△ The plum-sized berries of this African plant contains brazzein, a small, sweet protein.



# Structure-Based Drug Design: From the Computer to the Clinic

In 1981, doctors recognized a strange new disease in the United States. The first handful of patients suffered from unusual cancers and pneumonias. As the disease spread, scientists discovered its cause—a virus that attacks human immune cells. Now a major killer worldwide, the disease is best known by its acronym, AIDS.

Formally called acquired immunodeficiency syndrome, AIDS is caused by the human immunodeficiency virus, or HIV.

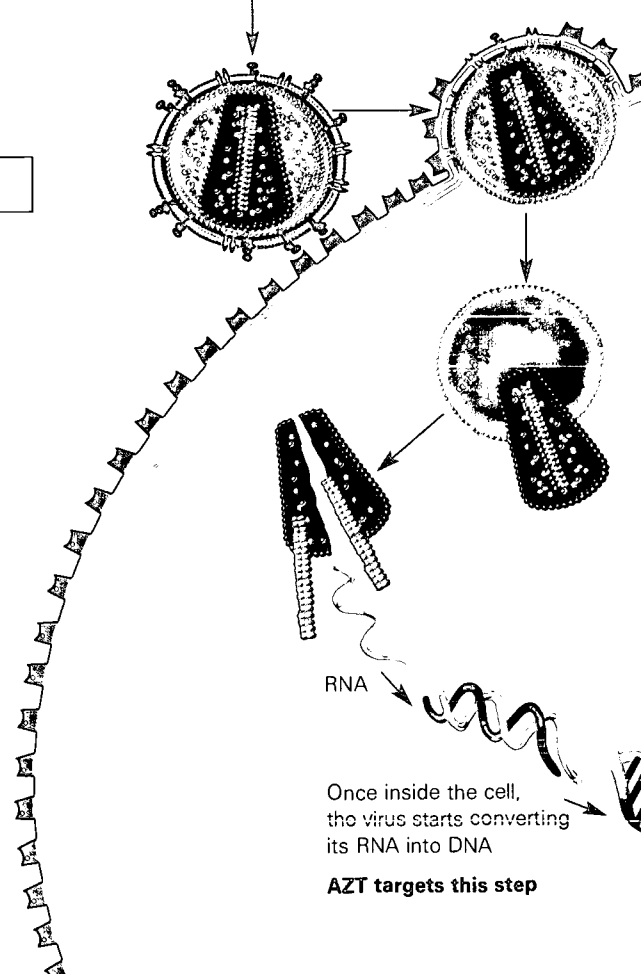
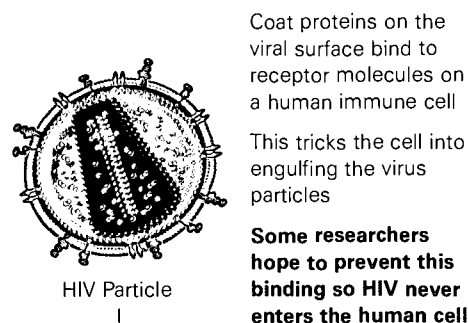
Although researchers have not found a cure for AIDS, structural biology has greatly enhanced their understanding of HIV and has played a key role in the development of drugs to treat this deadly disease.

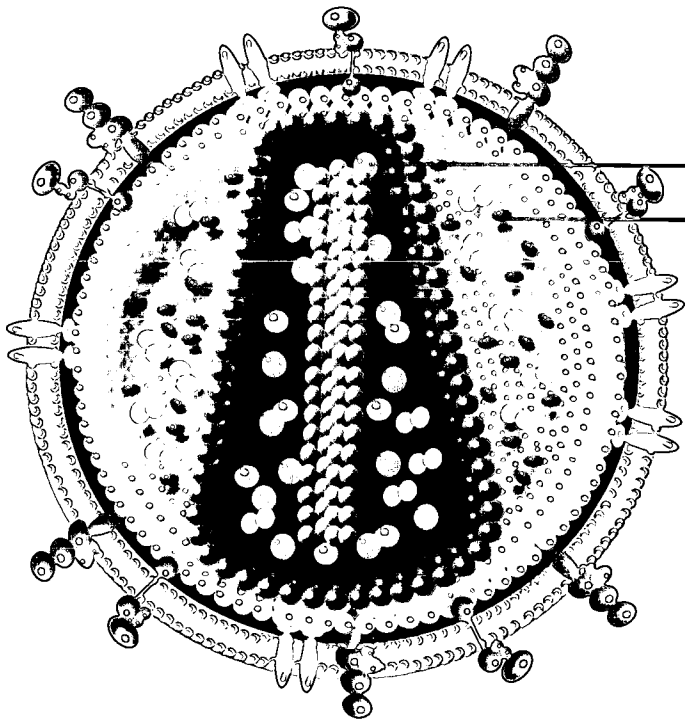
## The Life of an AIDS Virus

HIV was quickly recognized as a retrovirus, a type of virus that carries its genetic material not as DNA, as do most other organisms on the planet, but as RNA that the virus then “reverse transcribes” into DNA.

Long before anyone had heard of HIV, researchers in labs all over the world studied retroviruses, some of which were known to cause cancers in animals. These scientists traced out the life cycle of retroviruses and identified the key proteins and enzymes the viruses use to infect cells.

When HIV was identified as a retrovirus, the work of these scientists gave AIDS researchers an immediate jump-start. The viral proteins they had already identified became initial drug targets.

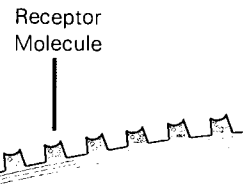
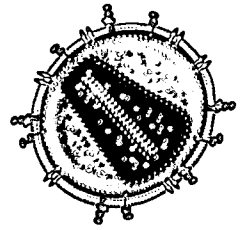




Targets of Current Drugs:  
Reverse Transcriptase  
Protease

HIV Particle (enlarged to show detail)

Mature virus particles are able to attack other human immune cells

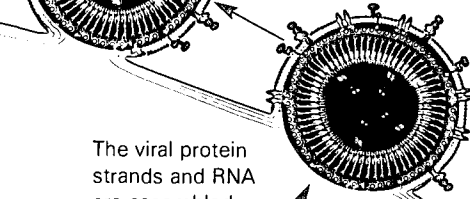


Human Immune Cell

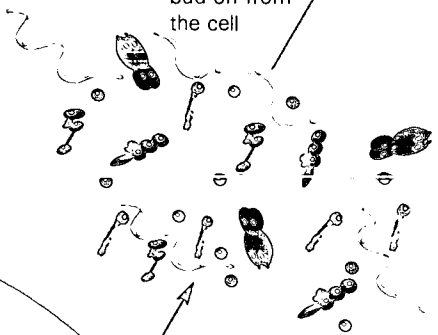
HIV protease chops the viral protein strands into separate proteins, causing the "daughter" virus particles to mature into infectious particles

**HIV protease inhibitors block this step**

The viral protein strands and RNA are assembled into immature "daughter" virus particles that bud off from the cell



The cell's normal machinery churns out viral RNA and long viral protein strands



The virus incorporates its genetic material into the human cell's DNA

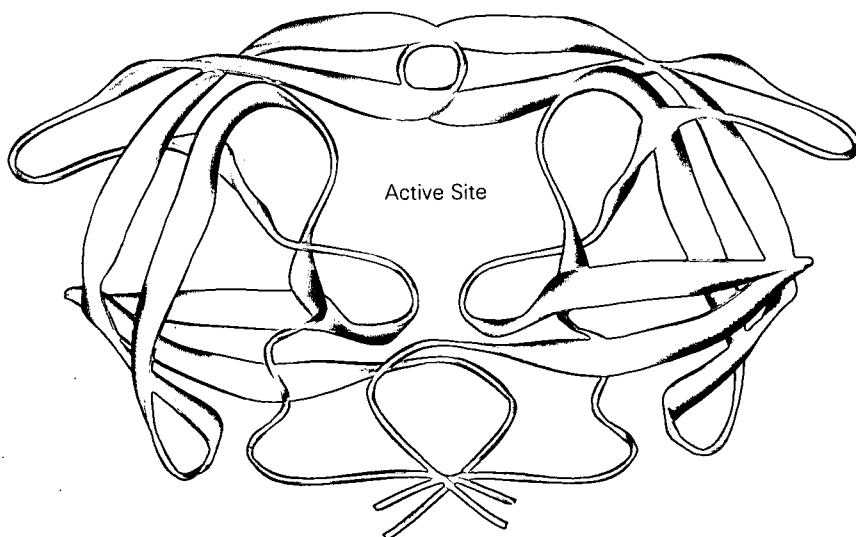
Some scientists are trying to develop drugs to block this step



Human Cell Nucleus

### Revealing the Target

Our story begins in 1989, when scientists determined the X-ray crystallographic structure of HIV protease, a viral enzyme critical in HIV's life cycle. Pharmaceutical scientists hoped that by blocking this enzyme, they could prevent the virus from spreading in the body.



- ▲ HIV protease is a symmetrical molecule with two equal halves and an active site near its center.

Molecular models of HIV protease in this chapter were generated by Alisa Zapp Machalek

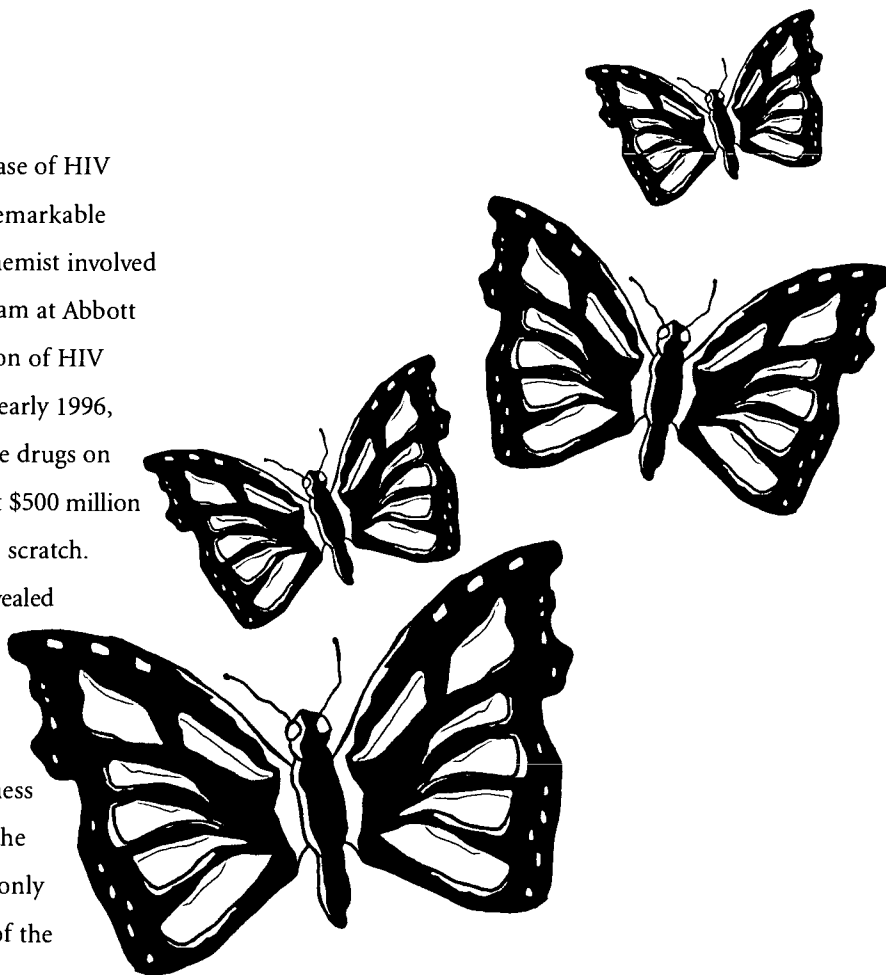
With the structure of HIV protease at their fingertips, researchers were no longer working blindly. They could finally see their target enzyme—in exhilarating, color-coded detail. By feeding the structural information into a computer modeling program, they could spin a model of the enzyme around, zoom in on specific atoms, analyze its chemical properties, and even strip away or alter parts of it.

Most importantly, they could use the computerized structure as a reference to determine the types of molecules that might block the enzyme. These molecules can be retrieved from chemical libraries or can be designed on a computer screen and then synthesized in a laboratory. Such structure-based drug design strategies have the potential to shave off years and millions of dollars from the traditional trial-and-error drug development process.

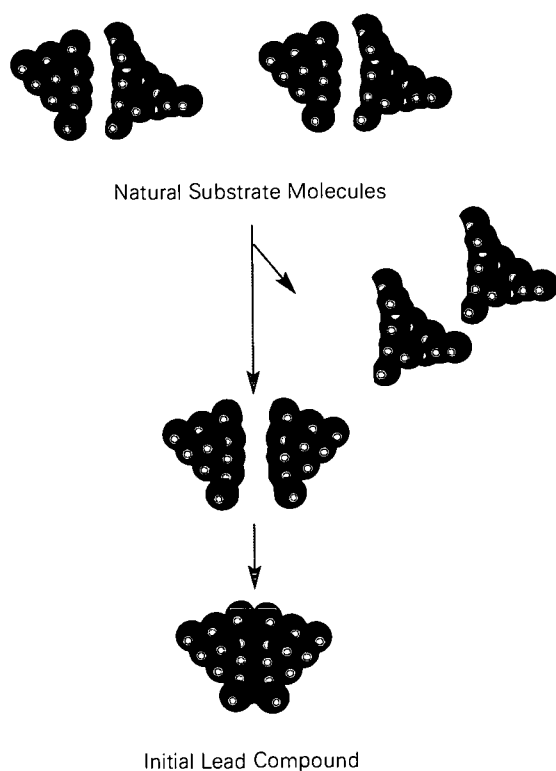
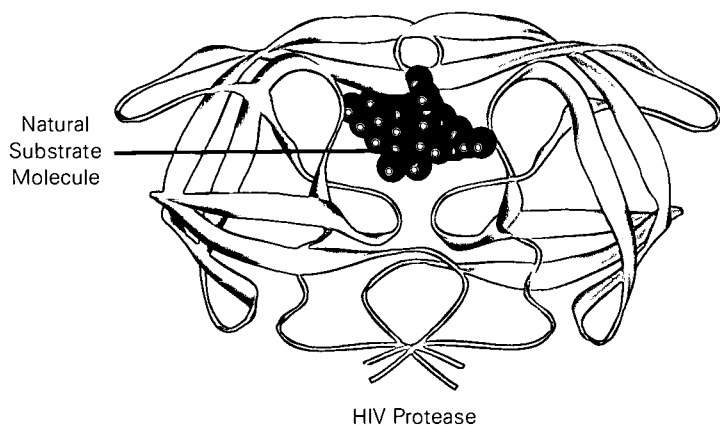
These strategies worked in the case of HIV protease inhibitors. “I think it’s a remarkable success story,” says Dale Kempf, a chemist involved in the HIV protease inhibitor program at Abbott Laboratories. “From the identification of HIV protease as a drug target in 1988 to early 1996, it took less than 8 years to have three drugs on the market.” Typically, it takes at least \$500 million and 15 years to develop a drug from scratch.

The structure of HIV protease revealed a crucial fact—like a butterfly, the enzyme is made up of two equal halves. For most such symmetrical molecules, both halves have a “business area,” or active site, that carries out the enzyme’s job. But HIV protease has only one such active site—in the center of the molecule where the two halves meet.

Pharmaceutical scientists knew they could take advantage of this feature. If they could plug this single active site with a small molecule, they could shut down the whole enzyme—and theoretically stop the virus’ spread in the body.





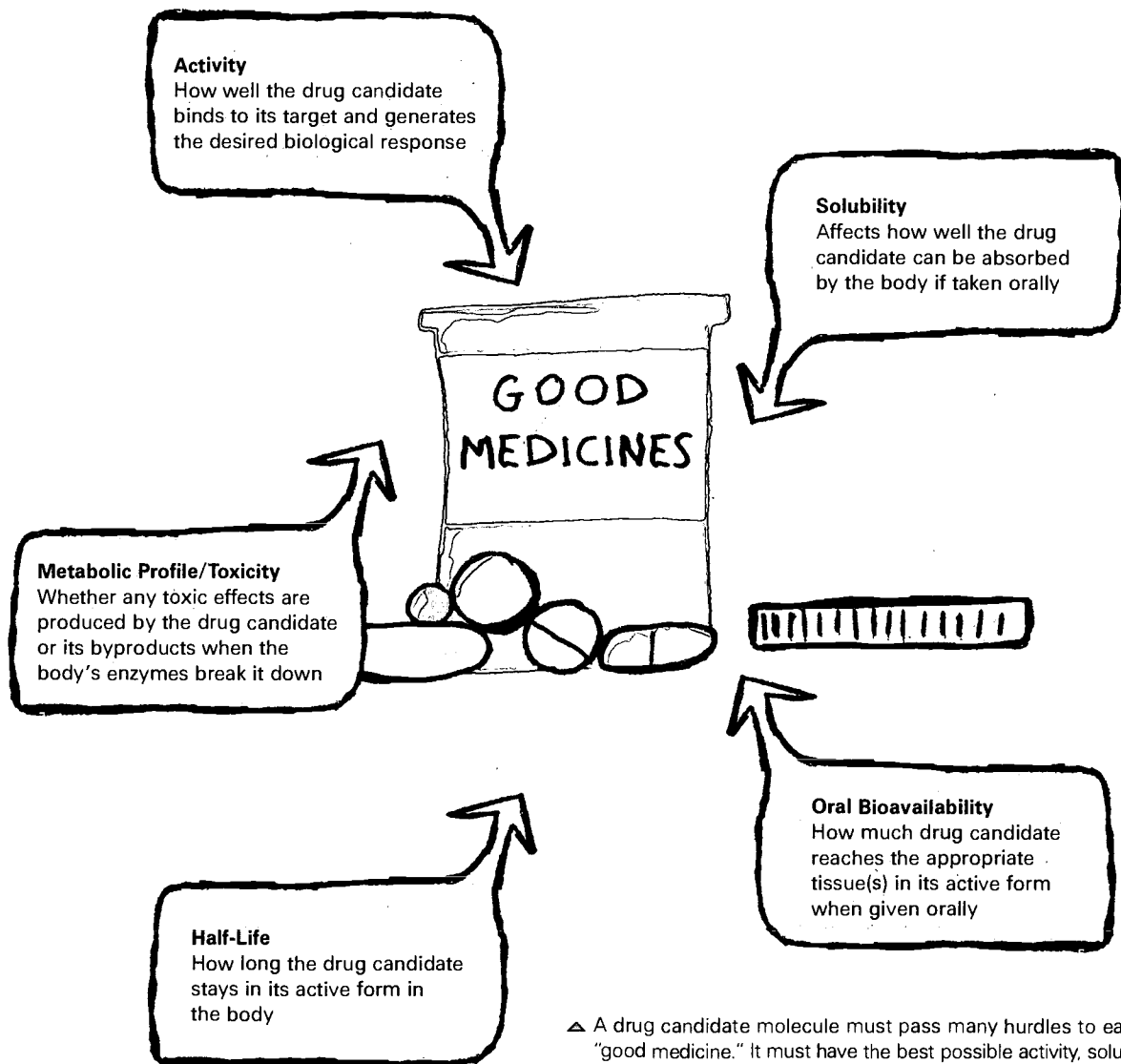


- ▲ Knowing that HIV protease has two symmetrical halves, pharmaceutical researchers initially attempted to block the enzyme with symmetrical small molecules. They made these by chopping in half molecules of the natural substrate, then making a new molecule by fusing together two identical halves of the natural substrate.

Several pharmaceutical companies started out by using the enzyme's shape as a guide. "We designed drug candidate molecules that had the same two-fold symmetry as HIV protease," says Kempf. "Conceptually, we took some of the enzyme's natural substrate [the molecules it acts upon], chopped these molecules in half, rotated them 180 degrees, and glued two identical halves together."

To the researchers' delight, the first such molecule they synthesized fit perfectly into the active site of the enzyme. It was also an excellent inhibitor—it prevented HIV protease from functioning normally. But it wasn't water-soluble, meaning it couldn't be absorbed by the body and would never be effective as a drug.

Abbott scientists continued to tweak the structure of the molecule to improve its properties. They eventually ended up with a nonsymmetrical molecule they called Norvir® (ritonavir).



△ A drug candidate molecule must pass many hurdles to earn the description "good medicine." It must have the best possible activity, solubility, bioavailability, half-life, and metabolic profile. Attempting to improve one of these factors often affects other factors. For example, if you structurally alter a lead compound to improve its activity, you may also decrease its solubility or shorten its half-life. The final result must always be the best possible compromise.

## Structure-Based Drug Design: Blocking the Lock

Traditionally, scientists identify new drugs either by fiddling with existing drugs or by testing thousands of compounds in a laboratory. If you think of the target molecule—HIV protease in this case—as a lock, this approach is rather like trying to design a key perfectly shaped to the lock if you're given an armload of tiny metal scraps, glue, and wire cutters.

Using a structure-based strategy, researchers have an initial advantage. With molecular modeling software, they can make a “mold” of the lock and and of the natural molecule, called a substrate, that fits into the lock and opens the door to viral replication. The goal is to plug the lock by finding a small molecule that fits inside HIV protease and prevents the natural substrate from entering.

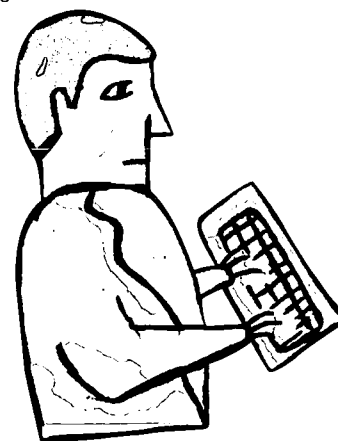
Knowing the exact three-dimensional shape of the lock, scientists can discard any of the metal scraps (small molecules) that are not the right size or shape to fit the lock. They might even be able to design a small molecule to fit the lock precisely. Such a molecule may be a starting point—a lead compound—for pharmaceutical researchers who are designing a drug to treat HIV infection.

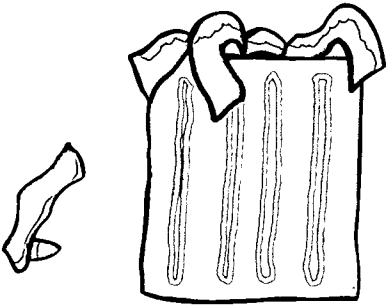
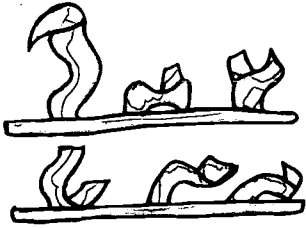
Of course, biological molecules are much more complex than locks and keys, and human bodies can react in unpredictable ways to drug molecules, so the road from the computer screen to pharmacy shelves remains long and bumpy.

► Traditional drug design often requires random testing of thousands—if not hundreds of thousands—of compounds (shown here as metal scraps)

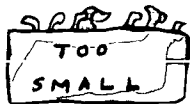
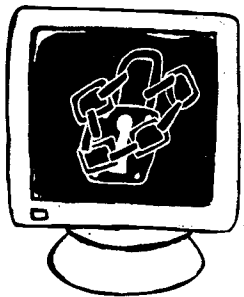


► By knowing the shape and chemical properties of the target molecule, scientists using structure-based drug design strategies can approach the job more “rationally.” They can discard the drug candidate molecules that have the wrong shape or properties.





Clinical Trials: Testing on humans is still one of the most time-consuming parts of drug development and one that is not accelerated by structural approaches



### A Hope for the Future

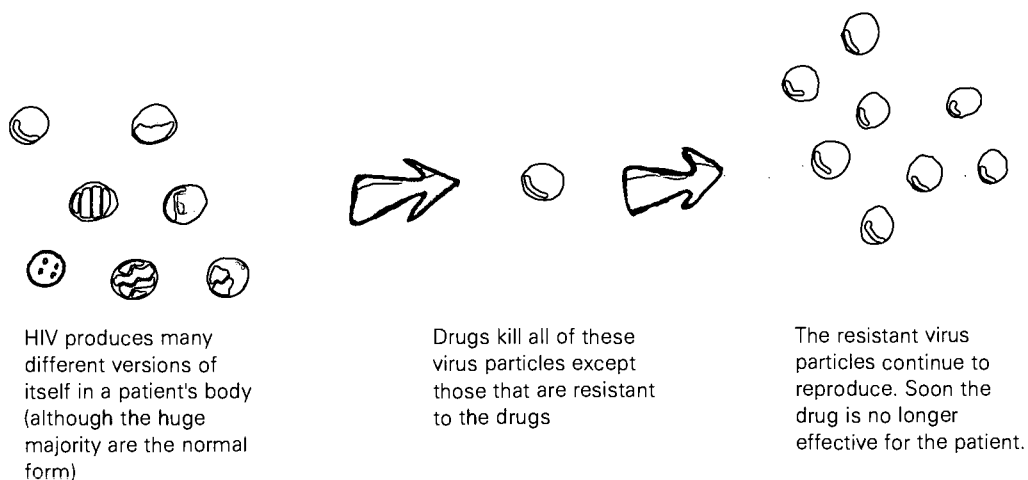
Between December 1995 and March 1996, the Food and Drug Administration approved the first three HIV protease inhibitors—Hoffman-La Roche’s Invirase™ (saquinavir), Abbott’s Norvir™ (ritonavir), and Merck and Co., Inc.’s Crixivan® (indinavir). Initially, these drugs were hailed as the first real hope in 15 years for people with AIDS. Newspaper headlines predicted that AIDS might even be cured.

Although HIV protease inhibitors did not become the miracle cure many had hoped for, they represent a triumph for antiviral therapy. Antibiotics that treat bacterial diseases abound (although they are becoming less effective as bacteria develop resistance), but doctors have very few drugs to treat viral infections.

Protease inhibitors are also noteworthy because they are a classic example of how structural biology can enhance traditional drug development. “They show that with some ideas about structure and rational drug design, combined with traditional medicinal chemistry, you can come up with potent drugs that function the way they’re predicted to,” says Kempf.

“That doesn’t mean we have all the problems solved yet,” he continues. “But clearly these compounds have made a profound impact on society.” The death rate from AIDS went down dramatically after these drugs became available. Now protease inhibitors are often prescribed with other anti-HIV drugs to create a “combination cocktail” that is more effective at squelching the virus than are any of the drugs individually.

### How HIV Resistance Arises

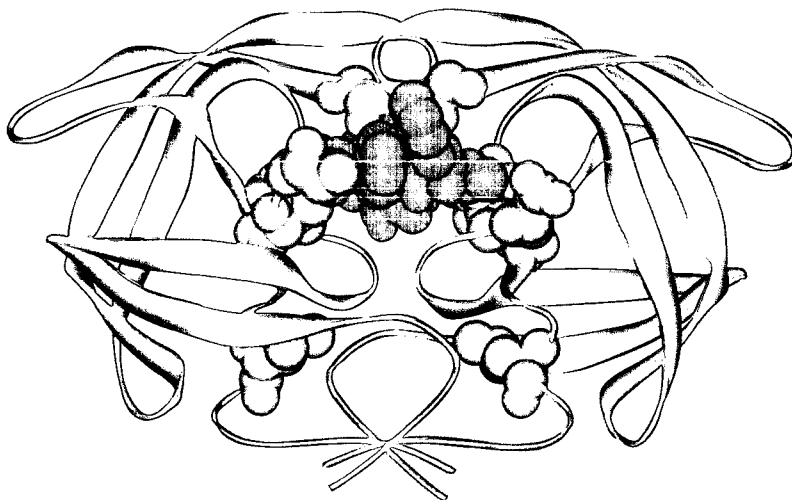


## Homing in on Resistance

HIV is a moving target. When it reproduces inside the body, instead of generating exact replicas of itself, it churns out a variety of slightly altered daughter virus particles. Some of these mutants are able to evade, or “resist,” the effects of a drug—and can pass that resistance on to their own daughter particles. While most virus particles initially succumb to the drug, these resistant mutants survive and multiply. Eventually, the drug loses its anti-HIV activity, because most of the virus particles in the infected person are resistant to it.

Some researchers now are working on new generations of HIV protease inhibitors that are designed to combat specific drug-resistant viral strains.

Detailed, computer-modeled pictures of HIV protease from these strains reveal how even amino acid substitutions far away from the enzyme’s active site can produce drug resistance. Some research groups are trying to beat the enzyme at its own game by designing drugs that bind specifically to these mutant amino acids. Others are designing mole-



△ Scientists have identified dozens of mutations (shown in red) that allow HIV protease to escape the effects of drugs. The protease molecules in some drug-resistant HIV strains have two or three such mutations. To outwit the enzyme’s mastery of mutation, researchers are designing drugs that interact specifically with amino acids in the enzyme that are critical for the enzyme’s function. This approach cuts off the enzyme’s escape routes. As a result, the enzyme—and thus the entire virus—is forced to succumb to the drug.

cules that latch onto the enzyme’s Achilles’ heels—the aspartic acids in the active site and other amino acids that, if altered, would render the enzyme useless. Still others are trying to discover inhibitors that are more potent, more convenient to take, have fewer side effects, or are better able to combat mutant strains of the virus.

## STUDENT SNAPSHOT

*The Fascination of Infection*

“I really like to study retroviruses,” says Kristi Pullen, who majored in biochemistry at the University of Maryland, Baltimore County (UMBC). “I also like highly infectious agents, like Ebola. The more virulent something is, the less it’s worked on, so it opens up all sorts of fascinating questions. I couldn’t help but be interested.”

In addition to her UMBC classwork, Pullen helped determine the structure of retroviruses in the NMR spectroscopy laboratory of Michael Summers. This research focuses on how retroviruses package “RNA warheads” that enable them to spread in the body. Eventually, the work may reveal a new drug target for retroviral diseases, including AIDS.



Kelly Burns Photography, Columbia, Maryland

“Working in Dr. Summers’ lab and other labs teaches you that research can be fun. It’s not just a whole lot of people in white coats. We went biking and skiing together.

All the people were great to work with.”

Kristi Pullen  
Graduate Student  
University of California, Berkeley

Until her senior year in high school, Pullen wanted to be an orthopedic surgeon. But after her first experience working in a lab, she recognized “there’s more to science than medicine.” Then, after taking some science courses, she realized she had an inner yearning to learn science and to work in a lab.

Pullen is now a graduate student at the University of California, Berkeley in the Department of Molecular and Cell Biology. She plans to continue

studying structural biology, to earn a Ph.D., and possibly also to earn an M.D.

She also has some longer-term goals.

“Ultimately what I want to do way, way, way down the line is head the NIH [National Institutes of Health] or CDC [Centers for Disease Control and Prevention] and in that way affect the health of a large number of people—the whole country.”



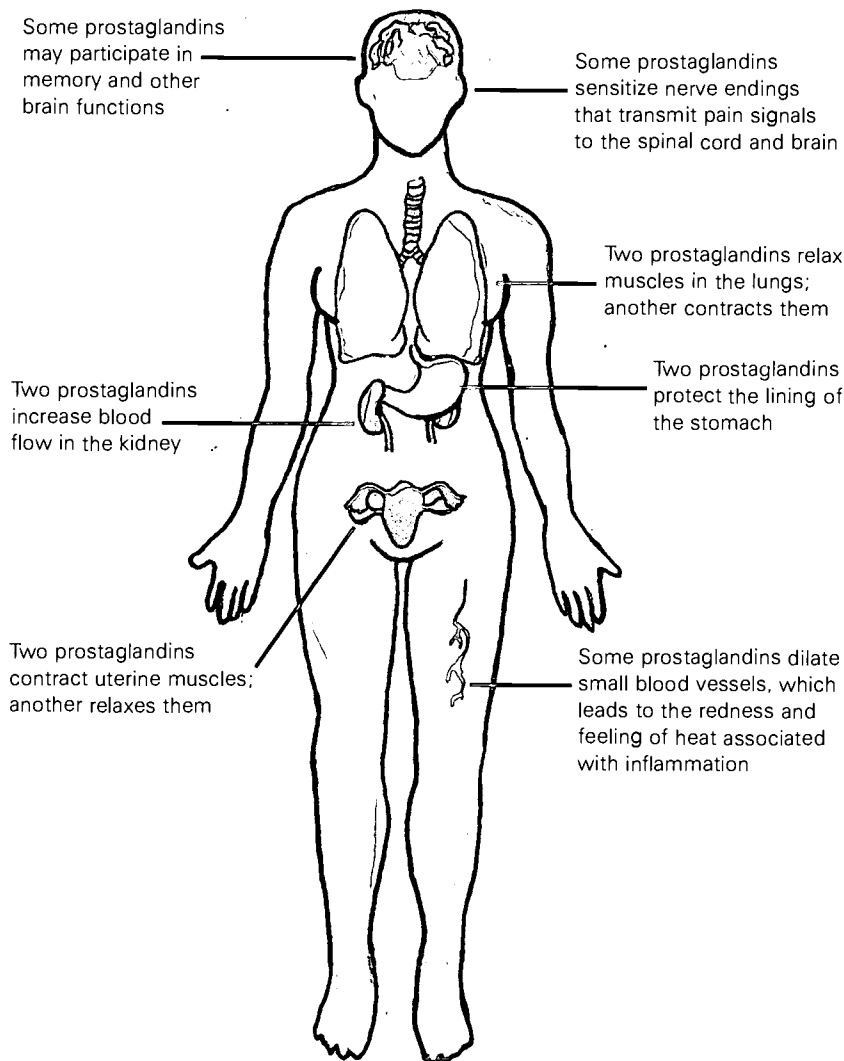


A fortunate discovery enabled scientists to design drugs that retain the anti-inflammatory properties of NSAIDs without the ulcer-causing side effects.

By studying the drugs at the molecular level, researchers learned that NSAIDs block the action of two closely related enzymes called cyclooxygenases. These enzymes are abbreviated COX-1 and COX-2.

Although the enzymes share some of the same functions, they also differ in important ways. COX-2 is produced in response to injury or infection and activates molecules that trigger inflammation and an immune response. By blocking COX-2, NSAIDs reduce inflammation and pain caused by arthritis, headaches, and sprains.

In contrast, COX-1 produces molecules, called prostaglandins, that protect the lining of the stomach from digestive acids. When NSAIDs block this function, they foster ulcers.



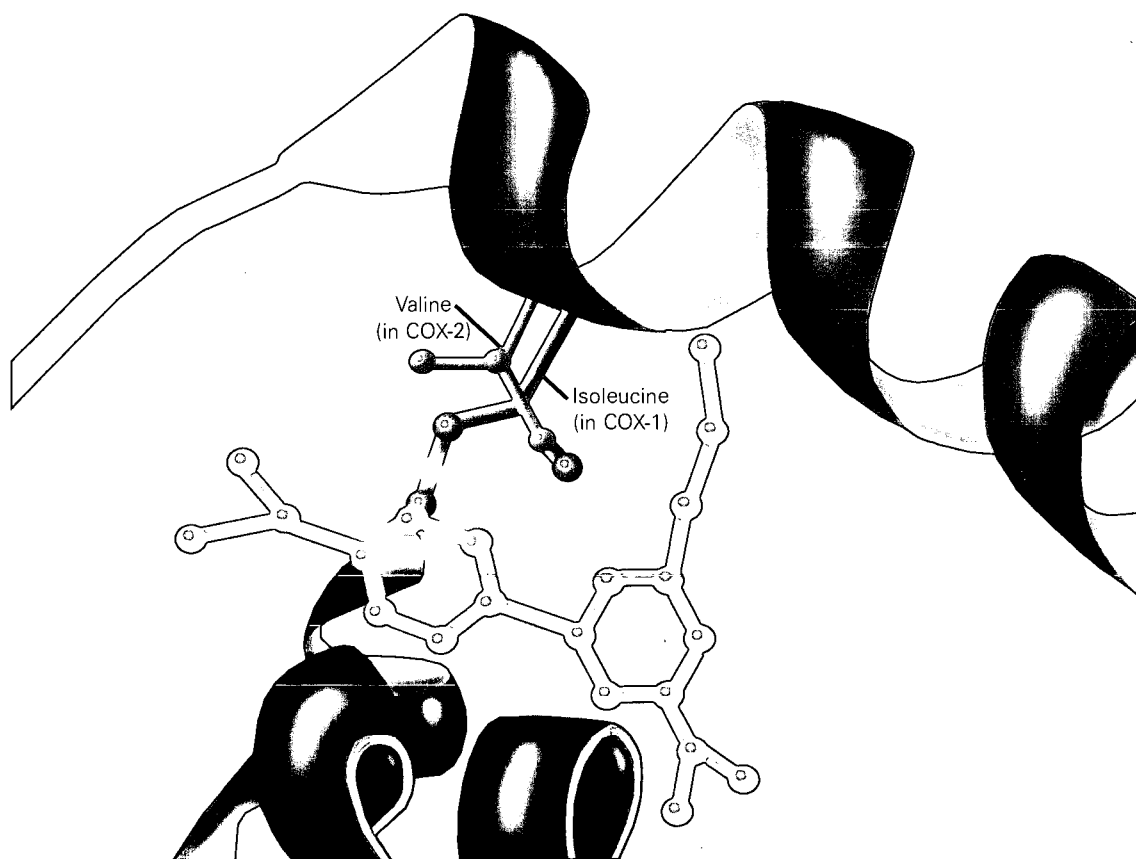
△ Both COX-1 and COX-2 produce prostaglandins, which have a variety of different—and sometimes opposite—roles in the body. Some of these roles are shown here.

To create an effective painkiller that doesn't cause ulcers, scientists realized they needed to develop new medicines that shut down COX-2 but not COX-1. Such a compound was discovered using standard medicinal chemistry. Searle marketed it under the name Celebrex®, and it quickly became the fastest selling drug in U.S. history,

generating more prescriptions in its first year than the next two leading drugs combined.

At the same time, scientists were working out the molecular structure of the COX enzymes. Through structural biology, they could see exactly why Celebrex®—and other so-called “super aspirin” drugs—plug up COX-2 but not COX-1.

The three-dimensional structures of COX-2 and COX-1 are almost identical. But there is one



△ The overall structures of COX-1 and COX-2 (ribbons) are nearly identical, but a close-up of the active site reveals why Celebrex® and similar molecules can bind to COX-2 but not to COX-1. A single amino acid substitution makes all the difference. At this one position, COX-2 contains valine, a small amino acid, while COX-1 contains isoleucine. The valine in COX-2

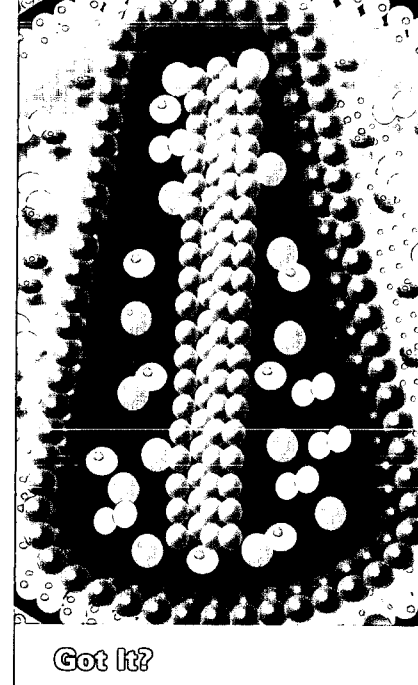
creates a pocket into which the “super aspirin” drugs (in yellow) can bind. The isoleucine in COX-1 elbows out the drugs. Because Celebrex® and other “super aspirin” drugs bind only to COX-2 and not to COX-1, they control pain and inflammation without causing stomach ulcers.

Adapted with permission from *Nature* ©1996 Macmillan Magazines Ltd.

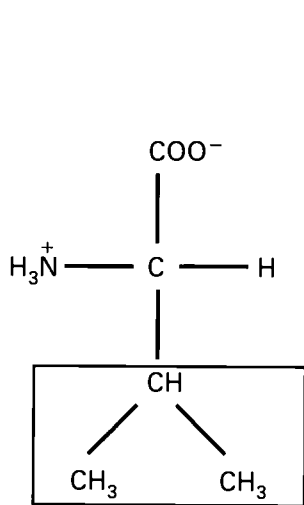
amino acid change in the active site of COX-2 that creates an extra binding pocket. It is this extra pocket into which Celebrex® binds.

In addition to showing researchers in atom-by-atom detail how the drug binds to its target, the structures are also greatly aiding the design of new, second- and third-generation drugs that

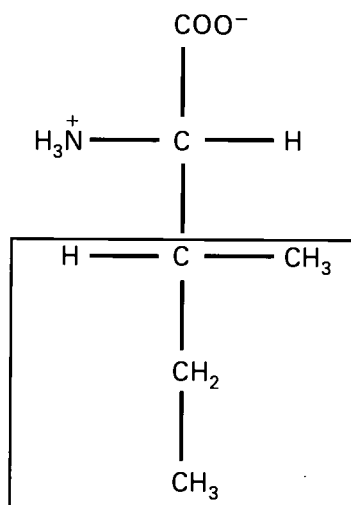
have different properties than Celebrex® or work better for certain people. And of course the structure of the COX enzymes will continue to provide basic researchers with insight into how these molecules work in the body.



Got It?



Valine



Isoleucine

What is structure-based drug design?

How was structure-based drug design used to develop an HIV protease inhibitor?

How is the structural difference between COX-1 and COX-2 responsible for the effectiveness of Celebrex®?

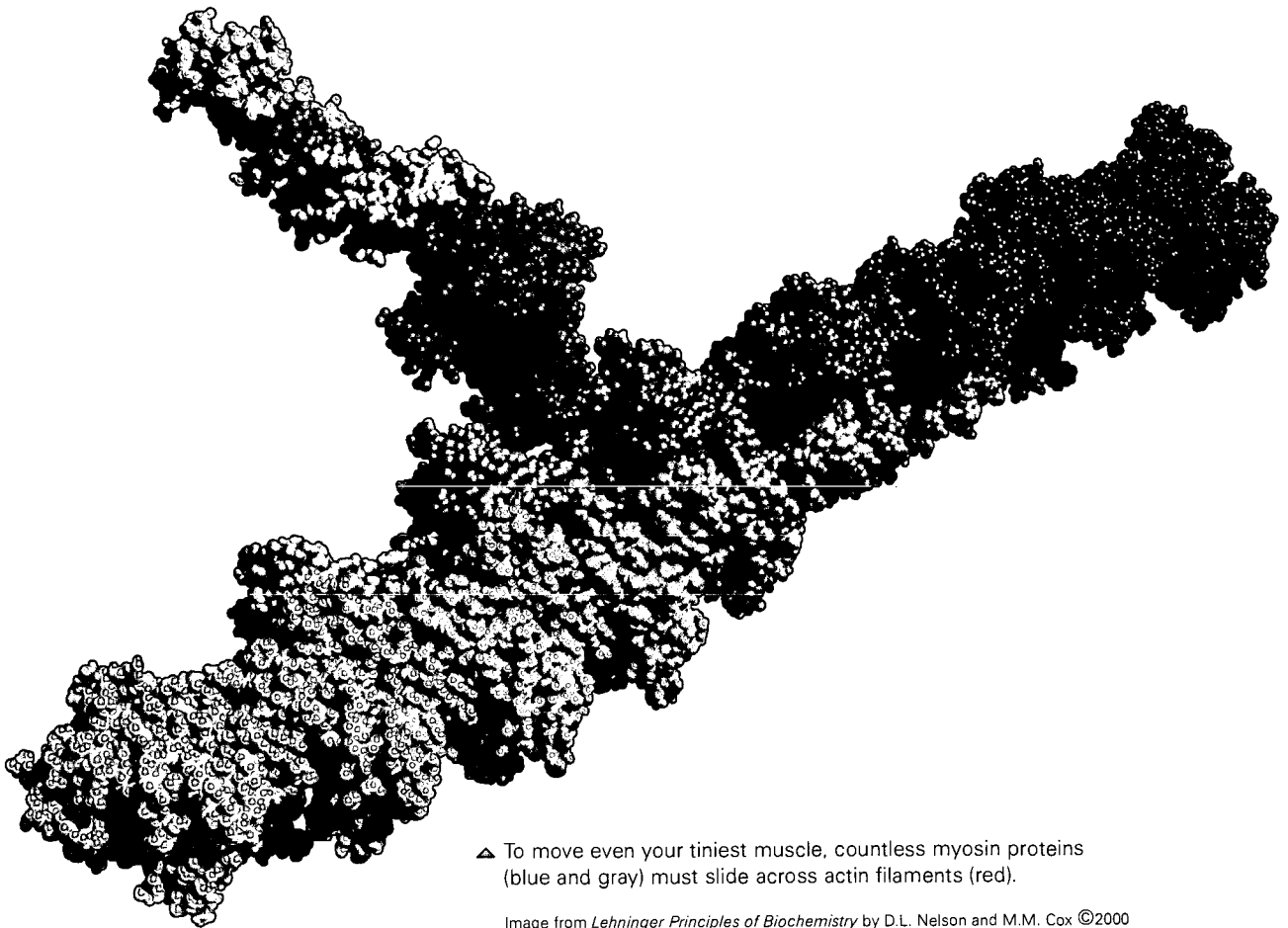
How do viruses become resistant to drugs?

## Beyond Drug Design

This booklet has focused on drug design as the most immediate medical application of structural biology. But structural biology has value and potential far beyond the confines of the pharmaceutical industry. At its root, structural biology teaches us about the fundamental nature of biological molecules. The examples below provide a tiny glimpse into areas in which structural biology has, and continues to, shed light.

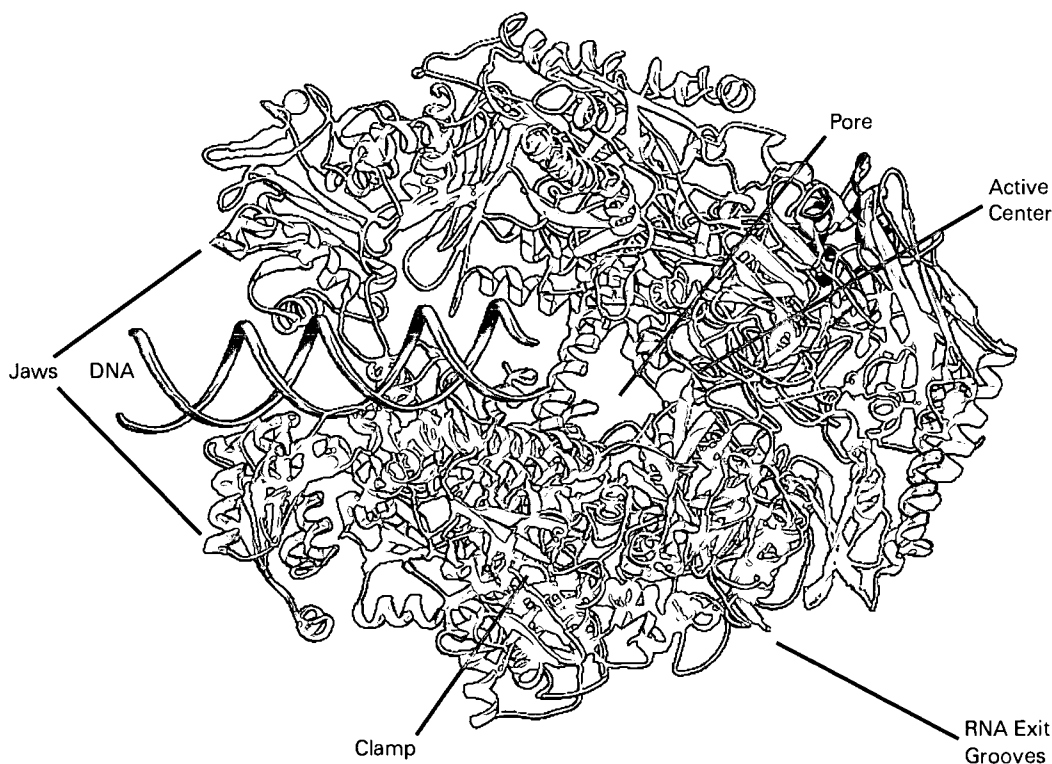
### Muscle Contraction

With every move you make, from a sigh to a sprint, thick ropes of myosin muscle proteins slide across rods of actin proteins in your cells. These proteins also pinch cells in two during cell division and enable cells to move and change shape—a process critical both to the formation of different tissues during embryonic development and to the spread of cancer. Detailed structures are available for both myosin and actin.



▲ To move even your tiniest muscle, countless myosin proteins (blue and gray) must slide across actin filaments (red).

Image from *Lehninger Principles of Biochemistry* by D.L. Nelson and M.M. Cox ©2000 by Worth Publishers. Used with permission.



△ The structure of RNA polymerase suggests, at the molecular level, how it reads DNA and makes a complementary strand of RNA.

Courtesy of Roger Kornberg, Stanford University

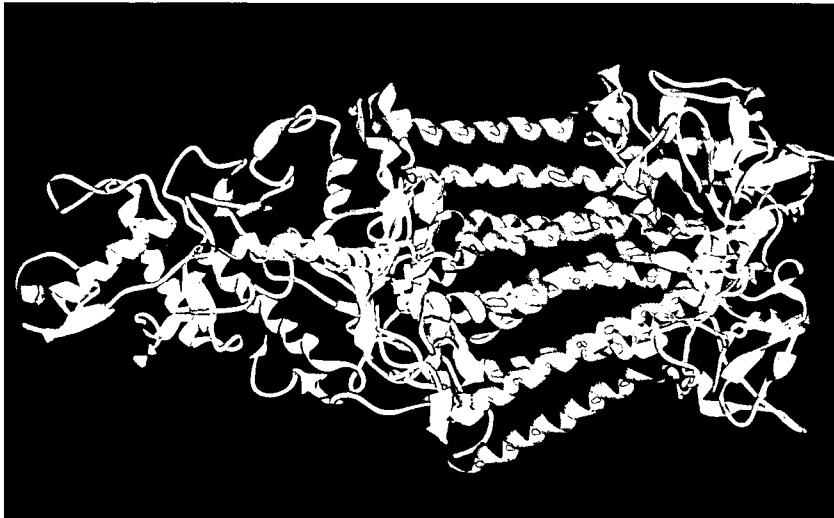
## Transcription and Translation

Cells use DNA instructions to make proteins. Dozens of molecules (mostly proteins) cling together and separate at carefully choreographed times to accomplish this task. The structures of many of these molecules are known and have provided a better understanding of these basic cellular processes. One example is RNA polymerase, an enzyme that reads DNA and synthesizes a

complementary strand of RNA. The enzyme is a molecular machine composed of a dozen different small proteins. The X-ray structure of RNA polymerase suggests a role for each of its proteins. The structure also reveals a pair of jaws that appear to grip DNA, a clamp that holds it in place, a pore through which RNA nucleotides probably enter, and grooves through which the completed RNA strand may thread out of the enzyme.

## Photosynthesis

“Photosynthesis is the most important chemical reaction in the biosphere, as it is the prerequisite for all higher life on Earth,” according to the Nobel Foundation, which awarded its 1988 Nobel Prize in chemistry to three researchers who determined the structure of a protein central to photosynthesis.



Alisa Zapp Machalek

▲ This bacterial photosynthetic reaction center was the first membrane protein to have its structure determined. The purple spirals (alpha helices) show where the protein crosses the membrane. In the orientation above, the left part of the molecule protrudes from the outside of the bacterial cell, while the right side is inside the cell.

This protein, from a photosynthetic bacterium rather than from a plant, was the first X-ray crystallographic structure of a protein embedded in a membrane. The achievement was remarkable, because it is very difficult to dissolve membrane-bound proteins in water—an essential step in the crystallization process. To borrow further from the Nobel Foundation: “[This] structural determination . . . has considerable chemical importance far beyond the field of photosynthesis. Many central biological functions in addition to photosynthesis . . . are associated with membrane-bound proteins. Examples are transport of chemical substances between cells, hormone action, and nerve impulses”—in other words, signal transduction.

## Signal Transduction

Hundreds, if not thousands, of life processes require a biochemical signal to be transmitted into cells. These signals may be hormones, small molecules, or electrical impulses, and they may reach cells from the bloodstream or other cells. Once signal molecules bind to receptor proteins on the outside surface of a cell, they initiate a cascade of reactions involving several other molecules inside the cell. Depending on the nature of the target cell and of the signaling molecule, this chain of reactions may trigger a nerve impulse,

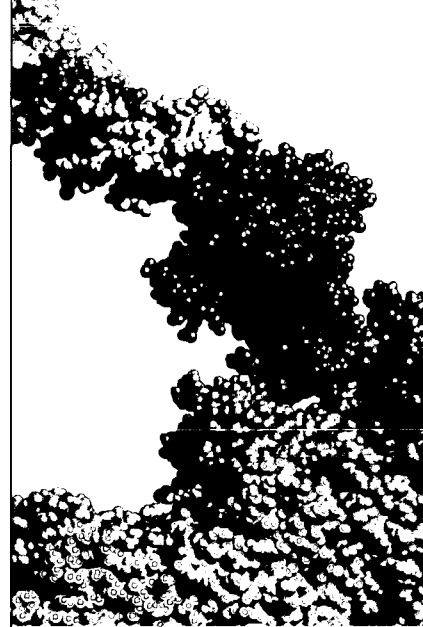


a change in cell metabolism, or the release of a hormone. Researchers have determined the structure of some molecules involved in common signal transduction pathways.

The receptor proteins that bind to the original signal molecule are often embedded in the cell's outer membrane so, like proteins involved in photosynthesis, they are difficult to crystallize. Obtaining structures from receptor proteins not only teaches us more about the basics of signal

transduction, it also brings us back to the pharmaceutical industry. At least 50 percent of the drugs on the market target receptor proteins—more than target any other type of molecule.

As this booklet shows, a powerful way to learn more about health, to fight disease, and to deepen our understanding of life processes is to study the details of biological molecules—the remarkable structures of life.

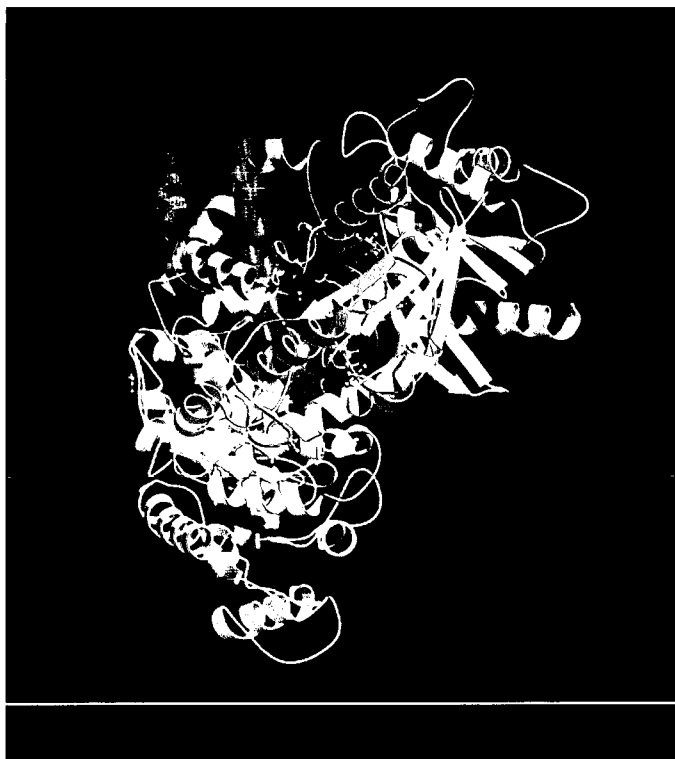


### Got It?

Considering this booklet as a whole, how would you define structural biology?

What are the scientific goals of those in the field?

If you were a structural biologist, what proteins or systems would you study? Why?



Protein Data Bank (<http://www.rcsb.org/pdb/>)

△ Members of a family of molecules, called G proteins, often act as conduits to pass the molecular message from receptor proteins to molecules in the cell's interior.



# Glossary

**Acquired immunodeficiency syndrome**

**(AIDS)** | A viral disease caused by the human immunodeficiency virus (HIV).

**Active site** | The region of an enzyme to which a substrate binds and at which a chemical reaction occurs.

**AIDS** | Acquired immunodeficiency syndrome— an infectious disease that is a major killer worldwide.

**Alpha helix** | A short, spiral-shaped section within a protein structure.

**Amino acid** | A chemical building block of proteins. There are 20 standard amino acids. A protein consists of a specific sequence of amino acids.

**Angstrom** | A unit of length used for measuring atomic dimensions. One angstrom equals  $10^{-10}$  meters.

**Antibiotic-resistant bacteria** | A strain of bacteria with slight alterations (mutations) in some of their molecules that enable the bacteria to survive drugs designed to kill them.

**Atom** | A fundamental unit of matter. It consists of a nucleus and electrons.

**AZT (azido-deoxythymidine)** | A drug used to treat HIV. It targets the reverse transcriptase enzyme.

**Bacterium (*pl.* bacteria)** | A primitive, one-celled microorganism without a nucleus. Bacteria live almost everywhere in the environment. Some bacteria may infect humans, plants, or animals. They may be harmless or they may cause disease.

**Base** | A chemical component (the fundamental information unit) of DNA or RNA. There are four bases in DNA: adenine (A), thymine (T), cytosine (C), and guanine (G). RNA also contains four bases, but instead of thymine, RNA contains uracil (U).

**Beta sheet** | A pleated section within a protein structure.

**Chaperones** | Proteins that help other proteins fold or escort other proteins throughout the cell.

**Chemical shift** | An atomic property that varies depending on the chemical and magnetic properties of an atom and its arrangement within a molecule. Chemical shifts are measured by NMR spectroscopists to identify the types of atoms in their samples.

**COX-1 (cyclooxygenase-1)** | An enzyme made continually in the stomach, blood vessels, platelet cells, and parts of the kidney. It produces prostaglandins that, among other things, protect the lining of the stomach from digestive acids. Because NSAIDs block COX-1, they foster ulcers.

**COX-2 (cyclooxygenase-2)** | An enzyme found in only a few places, such as the brain and parts of the kidney. It is made only in response to injury or infection. It produces prostaglandins involved in inflammation and the immune response. NSAIDs act by blocking COX-2. Because elevated levels of COX-2 in the body have been linked to cancer, scientists are investigating whether blocking COX-2 may prevent or treat some cancers.

**Cyclooxygenases** | Enzymes that are responsible for producing prostaglandins and other molecules in the body.

**Deoxyribose** | The type of sugar in DNA.

**DNA (deoxyribonucleic acid)** | The substance of heredity. A long, usually double-stranded chain of nucleotides that carries genetic information necessary for all cellular functions, including the building of proteins. DNA is composed of the sugar deoxyribose, phosphate groups, and the bases adenine, thymine, guanine, and cytosine.

**Drug target** | See *target molecule*.

**Electromagnetic radiation** | Energy radiated in the form of a wave. It includes all kinds of radiation, including, in order of increasing energy, radio waves, microwaves, infrared radiation (heat), visible light, ultraviolet radiation, X-rays, and gamma radiation.

**Enzyme** | A substance, usually a protein, that speeds up, or catalyzes, a specific chemical reaction without being permanently altered or consumed. Some RNA molecules can also act as enzymes.

**Gauss** | A unit of magnetic field strength (also called magnetic flux density). The Earth's magnetic field at its surface is approximately 0.5 gauss. A good loudspeaker coil is on the order of 10,000 gauss, or 1 tesla.

**Gene** | A unit of heredity. A segment of DNA that contains the code for a specific protein or protein subunit.

**Genetic code** | The set of triplet letters in DNA (or mRNA) that code for specific amino acids.

**HIV protease** | An HIV enzyme that is required during the life cycle of the virus. It is required for HIV virus particles to mature into fully infectious particles.

**Human immunodeficiency virus (HIV)** | The virus that causes AIDS.

**Inhibitor** | A molecule that “inhibits,” or blocks, the biological action of another molecule.

**Isotope** | A form of a chemical element that contains the same number of protons but a different number of neutrons than other forms of the element. Isotopes are often used to trace atoms or molecules in a metabolic pathway. In NMR, only one isotope of each element contains the correct magnetic properties to be useful.

**Kilodalton** | A unit of mass equal to 1,000 daltons. A dalton is a unit used to measure the mass of atoms and molecules. One dalton equals the atomic weight of a hydrogen atom ( $1.66 \times 10^{-24}$  grams).

**Lead compound** | A molecule, usually a small one, that pharmaceutical researchers use as the basis for a drug. Often, the lead compound shows some of the desired biological activity, but it must be chemically altered to enhance this activity and to make the molecule safe and effective for delivery as a drug.

**MAD** | See *multi-wavelength anomalous diffraction*.

**Megahertz** | A unit of measurement equal to 1,000,000 hertz. A hertz is defined as one event or cycle per second and is used to measure the frequency of radio waves and other forms of electromagnetic radiation. The strength of NMR magnets is often reported in megahertz, with most NMR magnets ranging from 500 to 800 megahertz.

**Messenger RNA (mRNA)** | An RNA molecule that serves as an intermediate in the synthesis of protein. Messenger RNA is complementary to DNA and carries genetic information to the ribosome.

**Molecule** | The smallest unit of matter that retains all of the physical and chemical properties of that substance. It consists of one or more identical atoms or a group of different atoms bonded together.

**mRNA** | Messenger RNA.

**Multi-dimensional NMR** | A technique used to solve complex NMR problems.

**Multi-wavelength anomalous diffraction (MAD)** | A technique used in X-ray crystallography that accelerates the determination of protein structures. It uses X-rays of different wavelengths, relieving crystallographers from having to make several different metal-containing crystals.

**NMR** | Nuclear magnetic resonance.

**NMR-active atom** | An atom that has the correct magnetic properties to be useful for NMR. For some atoms, the NMR-active form is a rare isotope, such as  $^{13}\text{C}$  or  $^{15}\text{N}$ .

**NOESY** | Nuclear Overhauser effect spectroscopy.

**Non-steroidal anti-inflammatory drugs** | A class of medicines used to treat pain and inflammation. Examples include aspirin and ibuprofen. They work by blocking the action of the COX-2 enzyme. Because they also block the COX-1 enzyme, they can cause side effects such as stomach ulcers.

**NSAIDs** | Non-steroidal anti-inflammatory drugs such as aspirin or ibuprofen.

**Nuclear magnetic resonance (NMR) spectroscopy** | A technique used to determine the detailed, three-dimensional structure of molecules and, more broadly, to study the physical, chemical, and biological properties of matter. It uses a strong magnet that interacts with the natural magnetic properties in atomic nuclei.

**Nuclear Overhauser effect spectroscopy (NOESY)** | An NMR technique used to help determine protein structures. It reveals how close different protons (hydrogen nuclei) are to each other in space.

**Nucleotide** | A subunit of DNA or RNA that includes one base, one phosphate molecule, and one sugar molecule (deoxyribose in DNA, ribose in RNA). Thousands of nucleotides join end-to-end to create a molecule of DNA or RNA. See *base*, *phosphate group*.

**Nucleus (*pl.* nuclei) |** 1. The membrane-bounded center of a cell, which contains genetic material. 2. The center of an atom, made up of protons and neutrons.

**Phosphate group |** A chemical group found in DNA and RNA, and often attached to proteins and other biological molecules. It is composed of one phosphorous atom bound to four oxygen atoms.

**Photosynthesis |** The chemical process by which green plants, algae, and some bacteria use the Sun's energy to synthesize organic compounds (initially carbohydrates).

**Prostaglandins |** A hormone-like group of molecules involved in a variety of functions in the body, including inflammation, blood flow in the kidney, protection of the stomach lining, blood clotting, and relaxation or contraction of muscles in the lungs, uterus, and blood vessels. The formation of prostaglandins is blocked by NSAIDs.

**Protein |** A large biological molecule composed of amino acids arranged in a specific order determined by the genetic code and folded into a specific three-dimensional shape. Proteins are essential for all life processes.

**Receptor protein |** Specific proteins found on the cell surface to which hormones or other molecules bind, triggering a specific reaction within the cell. Receptor proteins are responsible for initiating reactions as diverse as nerve impulses, changes in cell metabolism, and hormone release.

**Resistance |** See *antibiotic-resistant bacteria*.

Viruses can also develop resistance to antiviral drugs.

**Retrovirus |** A type of virus that carries its genetic material as single-stranded RNA, rather than as DNA. Upon infecting a cell, the virus generates a DNA replica of its RNA using the enzyme reverse transcriptase.

**Reverse transcriptase |** An enzyme found in retroviruses that copies the virus' genetic material from single-stranded RNA into double-stranded DNA.

**Ribose |** The type of sugar found in RNA.

**Ribosomal RNA |** RNA found in the ribosome.

**RNA (ribonucleic acid) |** A long, usually single-stranded chain of nucleotides that has structural, genetic, and enzymatic roles. There are three major types of RNA, which are all involved in making proteins: messenger RNA (mRNA), transfer RNA (tRNA), and ribosomal RNA (rRNA). RNA is composed of the sugar ribose, phosphate groups, and the bases adenine, uracil, guanine, and cytosine. Certain viruses contain RNA, instead of DNA, as their genetic material.

**Side chain |** The part of an amino acid that confers its identity. Side chains range from a single hydrogen atom (for glycine) to a group of 15 or more atoms.

**Signal transduction |** The process by which chemical, electrical, or biological signals are transmitted into and within a cell.

**Structural biology** | A field of study dedicated to determining the detailed, three-dimensional structures of biological molecules to better understand the function of these molecules.

**Structural genomics** | A field of study that seeks to determine a large inventory of protein structures based on gene sequences. The eventual goal is to be able to produce approximate structural models of any protein based on its gene sequence. From these structures and models, scientists hope to learn more about the biological function of proteins.

**Structure-based drug design** | An approach to developing medicines that takes advantage of the detailed, three-dimensional structure of target molecules.

**Substrate** | A molecule that binds to an enzyme and undergoes a chemical change during the ensuing enzymatic reaction.

**Synchrotron** | A large machine that accelerates electrically charged particles to nearly the speed of light and maintains them in circular orbits. Originally designed for use by high-energy physicists, synchrotrons are now heavily used by structural biologists as a source of very intense X-rays.

**Target molecule (or target protein)** | The molecule on which pharmaceutical researchers focus when designing a drug. Often, the target molecule is from a virus or bacterium, or is

an abnormal human protein. In these cases, the researchers usually seek to design a small molecule—a drug—to bind to the target molecule and block its action.

**Tesla** | A unit of magnetic field strength (also called magnetic flux density). A field of 1 tesla is quite strong; the largest NMR magnets are approximately 20 teslas. One tesla equals 10,000 gauss.

**Transcription** | The first major step in protein synthesis, in which the information coded in DNA is copied (transcribed) into mRNA.

**Translation** | The second major step in protein synthesis, in which the information encoded in mRNA is deciphered (translated) into sequences of amino acids. This process occurs at the ribosome.

**Virus** | An infectious microbe that requires a host cell (plant, animal, human, or bacterial) in which to reproduce. It is composed of proteins and genetic material (either DNA or RNA).

**Virus particle** | A single member of a viral strain, including all requisite proteins and genetic material.

**X-ray crystallography** | A technique used to determine the detailed, three-dimensional structure of molecules. It is based on the scattering of X-rays through a crystal of the molecule under study.

## Discrimination Prohibited

Under provisions of applicable public laws enacted by Congress since 1964, no person in the United States shall, on the grounds of race, color, national origin, handicap, or age, be excluded from participation in, be denied the benefits of, or be subjected to discrimination under any program or activity (or, on the basis of sex, with respect to any education program or activity) receiving Federal financial assistance. In addition, Executive Order 11141 prohibits discrimination on the basis of age by contractors and subcontractors in the performance of Federal contracts, and Executive Order 11246 states that no federally funded contractor may discriminate against any employee or applicant for employment because of race, color, religion, sex, or national origin. Therefore, the programs of the National Institute of General Medical Sciences

must be operated in compliance with these laws and Executive Orders.

## Accessibility

This publication can be made available in formats that are more accessible to people with disabilities. To request this material in a different format, contact the NIGMS Office of Communications and Public Liaison at (301) 496-7301, TDD (301) 402-6327, or write to the office at the following address:

45 Center Drive MSC 6200  
Room 1AS.25  
Bethesda, MD 20892-6200

DEPT OF HEALTH AND HUMAN SERVICES  
NATIONAL INSTITUTES OF HEALTH  
NATIONAL INSTITUTE OF GENERAL MEDICAL SCIENCES  
45 CENTER DR RM 1AS.25 MSC 6200  
BETHESDA MD 20892-6200



NO POSTAGE  
NECESSARY  
IF MAILED  
IN THE  
UNITED STATES



OFFICIAL BUSINESS  
PENALTY FOR PRIVATE USE \$300

**BUSINESS REPLY MAIL**  
FIRST-CLASS MAIL PERMIT NO. 13155 WASHINGTON DC

POSTAGE WILL BE PAID BY NIH DHHS

NATIONAL INSTITUTES OF HEALTH  
NATIONAL INSTITUTE OF GENERAL MEDICAL SCIENCES  
OFFICE OF COMMUNICATIONS AND PUBLIC LIAISON  
45 CENTER DR RM 1AS.25 MSC 6200  
BETHESDA MD 20814-9692

67

30



**A T T E N T I O N** : all readers of *The Structures of Life*.

We would like your comments on this booklet. Please give us your opinion by filling out this postage-paid response card.

1. Extent to which the booklet held your interest \_\_\_\_\_
2. Understandability \_\_\_\_\_
3. Amount and type of information presented \_\_\_\_\_
4. Usefulness and value of such a publication \_\_\_\_\_

Please comment on whether *The Structures of Life* helped you learn more about:

1. Structural biology research \_\_\_\_\_
2. What it's like to be a scientist \_\_\_\_\_
3. The excitement of biomedical research today \_\_\_\_\_

Other Comments: \_\_\_\_\_  
\_\_\_\_\_



U.S. DEPARTMENT OF  
HEALTH AND HUMAN SERVICES  
Public Health Service  
National Institutes of Health  
National Institute of General Medical Sciences

NIH Publication No. 01-2778  
Revised November 2000  
[www.nigms.nih.gov](http://www.nigms.nih.gov)





**U.S. Department of Education**  
Office of Educational Research and Improvement (OERI)  
National Library of Education (NLE)  
Educational Resources Information Center (ERIC)



## NOTICE

### Reproduction Basis



This document is covered by a signed "Reproduction Release (Blanket)" form (on file within the ERIC system), encompassing all or classes of documents from its source organization and, therefore, does not require a "Specific Document" Release form.



This document is Federally-funded, or carries its own permission to reproduce, or is otherwise in the public domain and, therefore, may be reproduced by ERIC without a signed Reproduction Release form (either "Specific Document" or "Blanket").

EFF-089 (3/2000)